

# 54BS617 V B JONMAR TOP GUN

68217549 aAa: 423 Beta Cas: A2A2 Kappa Casein: BB  
Born: 06/29/2021

**Genomic Gems, Preferred Sex**  
**JONMAR X FACT X WHISKEY**  
**#1 LIV Genomic Bull in the breed!**

04/2024 G-CDCB PERFORMANCE			
MILK +1026	FAT +20 / -0.09%	PROTEIN +32 / -0.01%	PPR 158
PROD. 67%R N/A DTRS/N/A HRDS TYPE 69%R			
PL +5.2	UDC +0.49	SCS 2.81	TYPE +0.10
Milking Speed 101		Conception (SCR) -0.4	
Cow Livability +3.6			
CE 2.6%	NM\$ \$453	DPR +2.8	MOB 0.0

**Sire:** Portmann BS Bays Jonmar  
**Dam:** V B HP Fact Tea Pot-ET 'V 88 V 88 MS'  
3-03 302d 2x 21,710 4.0 870 3.3 714  
R.I.P 6-02 246d 2x 22,818 3.5 803 3.2 741  
**MGS:** Kiba Anibal Fact  
**MGD:** Sun-Made Whiskey Tea 'E 90 E 92 MS'  
2-02 365d 2x 25,870 4.3 1,121 3.4 881  
2nd Jr 2 Yr Old WI State Show 2016

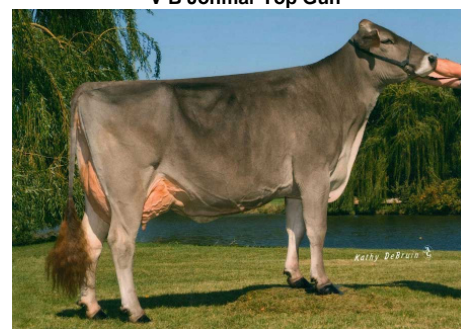
	G-CDCB	-2	-1	0	1	2
Stature	-0.10S					
Strength	0.90S					
Dairy Form	-1.00T					
Rump Angle	0.90S					
Thurl Width	0.20W					
Foot Angle	0.70S					
R Legs - Side View	0.00C					
R Legs - Rear View	0.10S					
Fore Attachment	1.70S					
Rear Udder Height	0.40H					
Rear Udder Width	-0.80N					
Udder Depth	1.80S					
Udder Cleft	0.30S					
Teat Placement	-0.10W					
Teat Length	0.20L					
Udder Composite	0.49					



MGD: Sun-Made Whiskey Tea 'EX 90'



V B Jonmar Top Gun



4th Dam: Milk & Honey Tonis Tessa  
E 91 E 92 MS



5th Dam: Timberline Jetway Toni 'EX 94'

**NEW GENERATION GENETICS**

www.brownswiss.com

(920) 568-0554

E-mail: info@brownswiss.com

# 54BS617 V B JONMAR

## TOP GUN

---

68217549    aAa: 423    Beta Cas: A2A2    Kappa Casein: BB  
Born: 06/29/2021

### **MATING RECOMMENDATIONS**

#### PPR:

1. Crazy Horse
2. Prince
3. Elan

#### Udder Comp:

1. Diego
2. Time Out
3. Halano P

#### Combined Components:

1. Crazy Horse
2. Titos
3. Prince

#### DPR:

1. Halano P
2. Deluxe
3. Darwin

≡

**NEW GENERATION GENETICS**

www.brownswiss.com

(920) 568-0554

E-mail: info@brownswiss.com