

2021 SPRING CATALOG

# NEW GENERATION GENETICS



*Champions*  
COLLECTION



CONCEPTION FIRST.

#1 PPR

NO. 2



*Your Source in Brown Swiss*



# 54BS573 LUCKY CARL

# #1 FAT

**Get Lucky x Cartel x Brookings**

**#1 FAT, #2 MILK, #2 PROTEIN, #5 PPR, #4 NM\$ & #5 SCR (PROVEN)**

★ **From Genomic High Production & Type to Proven Breed Leading Production & Eye Appeal.**

KULP-TERRA **LUCKY CARL** ET \*TM ■ REG-840003139216990 ■ aAa 324 ■ Kappa Cas BB ■ Beta Cas A2/A2



**COZY NOOK CARL TALLY**  
Owned by Cozy Nook Farm, Wisconsin



**COZY NOOK CARL TAMANGO**  
Owned by Cozy Nook Farm, Wisconsin



**DAM: KULP-TERRA CARTEL CATHY**  
**'EX 91 E 91 MS'**



**HILLTOP ACRES CARL DISNEY**  
Owned by Hilltop Acres, Iowa

G-CDCB	-1.5	-.75	0	.75	1.5
Stature	2.7 T				
Strength	0.3 S				
Dairy Form	1.7 O				
Rump Angle	-0.8 H				
Thurl Width	0.4 W				
Foot Angle	0.1 S				
Rear Leg Side View	1.2 S				
Rear Leg Rear View	0.0 S				
Fore Attachment	-1.4 W				
Rear Udder Height	1.0 H				
Rear Udder Width	1.3 W				
Udder Depth	-1.2 D				
Udder Cleft	-0.8 W				
Teat Placement	-0.6 W				
Teat Length	1.9 L				

04/21 G-CDCB PERFORMANCE			
MILK	FAT	PROTEIN	PPR
+1924	+67 / -.05%	+48 / -.07%	129
PROD. 82%R 29 DTRS/15 HRDS TYPE 76%R			
PL -1.3	UDC -0.05	SCS 3.01	TYPE +0.3
Conception (SCR) +1.4		SCR Rel. 75%	
Milking Speed 93		Cow Livability -2.1	
CE 2.8%	NM\$ \$306	DPR -1.6	MOB +0.1

Sire: **BMG LUST GET LUCKY ET \*TM**

Dam: **KULP-TERRA CARTEL CATHY ET 'EX 91 E 91 MS'**  
2-02 365d 2x 31,464 4.5 1,415 3.7 1,152  
3-10 365d 2x 34,080 4.2 1,427 3.5 1,207

MGD: **VOELKERS BROOK CARA 'E 91 E 91 MS'**  
2-06 321d 2x 24,779 4.4 1,090 3.5 871  
6-05 305d 2x 39,879 4.5 1,789 3.4 1,345  
R.I.P. 8-02 149d 2x 23,203 5.0 1,157 3.3 733

G- Indicates Genomic Enhanced Evaluation



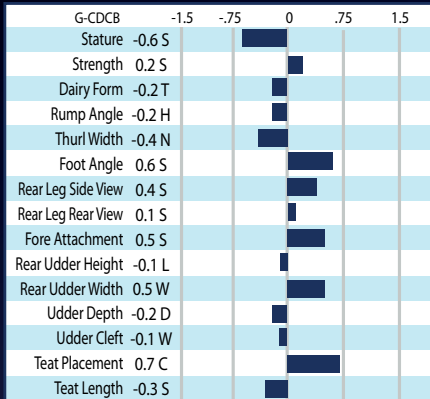
#1SCS #1PL #1NM\$

# 54B5564 JO-LANE DARIO **HAMPTON** ET \*TM

Dario x Cadence x Vigor

#1 NM\$, #1 PL, 1 SCS, #2 PROTEIN & #4 PPR (PROVEN)

REG-74300972 ■ aAa 246 ■ Kappa Cas BB ■ Beta Cas A1/A2



04/21 G-CDCB PERFORMANCE			
MILK	FAT	PROTEIN	PPR
+864	+30 / -.02%	+27 / -.01%	137
PROD. 93%R 136 DTRS/49 HRDS TYPE 88%R			
PL +6.4	UDC +0.29	SCS 2.68	TYPE +0.2
Conception (SCR) N/A		SCR Rel. N/A	
Milking Speed 100		Cow Livability +1.6	
CE 2.6%	NM\$ \$406	DPR +0.9	MOB +0.1

Sire: **SWITZER TALS PYSLI DARIO ET \*TM**

Dam: **JO-LANE CADENCE HILARY ET 'E 90 E 90 MS'**  
 2-02 365d 3x 32,590 4.2 1,381 3.5 1,139  
 3-09 365d 3x 39,190 5.0 1,968 3.6 1,428

MGD: **CUTTING EDGE V HIPHI ET 'V 89 E 91 MS'**  
 3-03 365d 3x 38,640 2.7 1,062 3.2 1,240



**TRIANGLE ACRES HAMPTON ARTIC**  
Owned by Triangle Acres, Illinois



**HILLTOP ACRES HP MOLLY**  
Owned by Hilltop Acres, Iowa



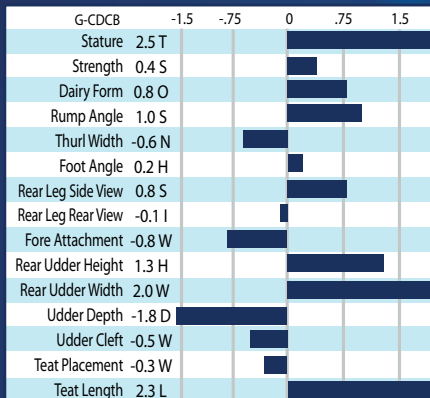
#1PROTEIN #1MILK #1PPR

# BMG LUST **GET LUCKY** ET \*TM

Huray x Wonderment x Prestige

#1 PPR, 1 MILK, #1 PROTEIN, #2 FAT & #3 NM\$ (PROVEN)

REG 68170100 ■ aAa 351 ■ Kappa Cas AB ■ Beta Cas A1/A2



04/21 G-CDCB PERFORMANCE			
MILK	FAT	PROTEIN	PPR
+2743	+63 / -.19%	+62 / -.12%	159
PROD. 96%R 452 DTRS/166 HRDS TYPE 95%R			
PL -1.1	UDC +0.40	SCS 3.11	TYPE +0.0
Conception (SCR) +1.0		SCR Rel. 76%	
Milking Speed 101		Cow Livability -0.8	
CE 2.9%	NM\$ \$341	DPR -1.6	MOB +0.1

Sire: **HURAY**

Dam: **HARTS LADY LUST ET 'E 90 E 90 MS'**  
 2-01 365d 3x 37,330 4.2 1,580 3.3 1,226  
 5-01 365d 3x 37,783 4.7 1,781 3.1 1,169

MGD: **BAIL-MIK PLADY LIBERTY ET 'E 91 E 91 MS'**  
 7-03 305d 2x 44,770 3.8 1,680 3.2 1,450  
 Lifetime: 1,046d 104,810m 4,337f 3,607p



**HILLTOP ACRES LUCKY DONUT TWIN**  
Owned by Hilltop Acres, Iowa



**LONE OAK GET LUCKY LILAC (2ND LACT.)**  
Owned by Triangle Acres, Illinois



G- Indicates Genomic Enhanced Evaluation



# 54BS558 DAREDEVIL \*TM

Brady x Bosephus x Glenn

#2 TYPE (TIED) & #5 UDC (PROVEN)

★ If You Want to Win the Milk Cow Classes in the 2020's Its Simple: Pick Daredevil or be 2nd!

HILLTOP ACRES B DAREDEVIL ET \*TM ■ REG 840003012559129 ■ aAa 261 ■ Kappa Cas BB ■ Beta Cas A2/A2



**CUTTING EDGE D TRISH ETV**  
UNANIMOUS ALL-AMERICAN JR. 3-YR-OLD 2020  
Owned by Edge-View Genetics, NY & KY



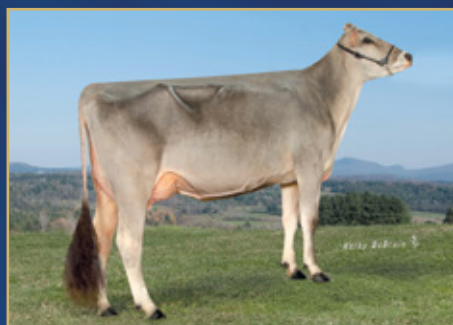
**R-HART DAREDEVIL 126 ET**  
RESERVE ALL-AMERICAN SR. 2-YR-OLD 2020  
Owned by Fairdale Farm, KY



**CUTTING EDGE D NEEMA ETV**  
NOMINATED ALL-AMERICAN SR. 2-YR-OLD 2020  
Owned by Edge-View Genetics, NY & KY



**HILLS VALLEY DAREDEVIL WOBBLE (2ND LACT)**  
MATERNAL SISTER TO 54BS567 WATCHOUT  
Owned by Hills Valley Farm, New York



**IE DOUBLE W DD GLENDA**  
NOMINATED ALL-AMERICAN JR. 2-YR-OLD 2020  
Owned by Double W & Goldfawn, CO & TX



**RDT DAREDEVIL LOLA**  
ALL-AMERICAN SPRING CALF 2020  
Owned by Katie Boehm & Red Dirt Genetics, KS

	G-IB	-1.5	-0.75	0	0.75	1.5
Stature	1.7 T					
Strength	0.5 S					
Dairy Form	0.9 O					
Rump Angle	0.9 S					
Thurl Width	-0.9 N					
Foot Angle	0.5 S					
Rear Leg Side View	0.0 S					
Rear Leg Rear View	0.0 S					
Fore Attachment	1.2 S					
Rear Udder Height	1.2 H					
Rear Udder Width	0.7 W					
Udder Depth	1.4 S					
Udder Cleft	0.8 S					
Teat Placement	0.0 C					
Teat Length	-0.1 S					

04/21 G-IB-M/US PERFORMANCE			
MILK	FAT	PROTEIN	PPR
+237	-17/ -11%	+1/ -.03%	28
PROD. 97%R 555 DTRS/286 HRDST TYPE 96%R			
PL -2.2	UDC +1.02	SCS 3.25	TYPE +0.8
Conception (SCR) -0.8		SCR Rel. %	
Milking Speed 107		Cow Livability -2.9	
CE 2.4%	NM\$ -\$167	DPR -2.6	MOB +0.2

Sire: **SHILOH JACKSON BRADY ET \*TM**

Dam: **HILLTOP ACRES BOSE DIXILAND ET 'E 92 E 93 MS'**

2-01 365d 3x 32,557 4.7 1,548 3.9 1,159  
4-05 365d 3x 47,044 4.8 2,235 3.6 1,694  
5-11 365d 3x 45,482 5.2 2,353 3.5 1,605  
R.I.P. 7-00 173d 3x 21,132 6.7 1,409 3.5 735

MGD: **HILLTOP ACRES GLN DIGNITY ET 'E 90'**  
4-02 305d 3x 30,960 4.6 1,435 3.6 1,121  
Lifetime: 1,289d 104,311m 4,878f 3,800p



G- Indicates Genomic Enhanced Evaluation





54BS482 **CARTER** \*TM

**TD x Wonderment x Migel**

**#3 TYPE** (TIED) (PROVEN)

★ **THE ALL-AMERICAN MAKER!** Leader for All-American Nominations sired 2018, 2019 & now 2020!

VOELKERS TD **CARTER** \*TM ■ REG-68119645 ■ aAa 132546 ■ DMS 246,234 ■ Kappa Casein: AB ■ Beta Cas: A1/A2



**NEW VIEW C BRAVO**

ALL-AMERICAN SR. 2-YR-OLD 2020

Owned by Ayars, Manion & Main, OH, KY & NY



**BO JOY CARTER GLITTER TW**

HONORABLE MENTION

ALL-AMERICAN SR. 3-YR-OLD 2020

Owned by Brooke Clark, New Hampshire



**JENLAR CARTER WALTZ**

UNANIMOUS ALL-AMERICAN JR. 3-YR-OLD 2019

INTERMEDIATE CHAMPION WDE 2019

Owned by Brianna Meyer, Wisconsin



**PAYACRES CARTER SUNKIST**

UNANIMOUS ALL-AMERICAN

WINTER YEARLING 2020

Owned by Taylor & Brianna Paye, Wisconsin



**BANOWETZ HW CARTER VANILLA**

RESERVE ALL-AMERICAN WINTER YEARLING 2020

Owned by Leslie & Linda Bruchey, Maryland



**ACCLAIMED C JAZZY ETV**

NOMINATED ALL-AMERICAN

SPRING YEARLING 2020

Owned by Mik & Linda Hellenbrand & Peter Vail, Wisconsin

	G-IB	-1.5	-0.75	0	0.75	1.5
Stature	3.7T					
Strength	0.6 S					
Dairy Form	1.6 O					
Rump Angle	0.2 S					
Thurl Width	0.5 W					
Foot Angle	0.8 S					
Rear Leg Side View	0.9 S					
Rear Leg Rear View	0.5 S					
Fore Attachment	-0.1 W					
Rear Udder Height	0.4 H					
Rear Udder Width	0.8 W					
Udder Depth	0.6 S					
Udder Cleft	0.2 S					
Teat Placement	1.4 C					
Teat Length	-0.4 S					

04/21 G-CDCB PERFORMANCE			
MILK	FAT	PROTEIN	PPR
+1035	+26 / -0.7%	+19 / -0.7%	38
PROD. 99%R 998 DTRS/393 HRDS TYPE 98%R			
PL -0.4	UDC +0.58	SCS 3.11	TYPE +0.7
Conception (SCR) -5.0		SCR Rel. 84%	
Milking Speed 95		Cow Livability -1.4	
CE 2.6%	NM\$ \$96	DPR -2.5	MOB +0.4

Sire: **WEBSTER RIDGE TD ET \*TM**

Dam: **VOELKERS WNDRNT CARABELLA 'E 90'**

2-03 364d 2x 20,600 4.7 972 3.6 741

3-04 334d 2x 22,510 4.2 951 3.3 741

4-05 365d 2x 32,300 4.2 1,368 3.4 1,106

MGD: **VOELKERS MIGEL CANDID '3E-94'**

5-03 335d 2x 33,090 5.1 1,673 3.6 1,189

Lifetime: 3,186d 222,610m 9,947f 7,389p

ALL-AMERICAN 5-YEAR-OLD 2009

G- Indicates Genomic Enhanced Evaluation



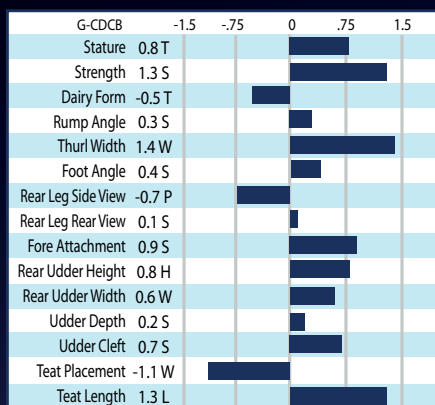
54BS568 BROWN HEAVEN R

# FAST & FURIOUS<sup>ET</sup> \*TM

Richard x Glenn x Agenda

#4 TYPE (TIED) (PROVEN)

REG-109109714 ■ aAa 423 ■ Kappa Cas BB ■ Beta Cas A2/A2



04/21 G-CDCB PERFORMANCE			
MILK	FAT	PROTEIN	PPR
+386	+3 / -.05%	-2 / -.06%	-2
PROD. 88%R 72 DTRS/35 HRDS TYPE 84%R			
PL -1.0	UDC +0.57	SCS 3.06	TYPE +0.6
Conception (SCR) -1.0		SCR Rel. %	
Milking Speed 101		Cow Livability -0.2	
CE 3.1%	NM\$ -\$53	DPR -0.5	MOB +0.0

Sire: **JO-DEE NEMO RICHARD** \*TM

Dam: **BROWN HEAVEN GLENN FANTASY**  
'E 97 E 97 MS'

4-00 365d 2x 30,091 3.8 1,151 3.6 1,096  
5-11 365d 2x 35,556 4.7 1,658 3.4 1,208  
Lifetime: 1,748d 128,519m 5,710f 4,770p  
GRAND CHAMPION WDE 2015 & 2016  
ALL-AMERICAN 2012, '14, '15 & '16  
RESERVE ALL-AMERICAN 2013  
ALL-CANADIAN 2012, 2013 & 2014  
RES. GRAND CHAMPION WDE 2014



**R N R FNF PIZAZZ ET**

Owned by R N R Swiss, Ohio



**TOPP-VIEW FF AFRICA**

Owned by Voegeli Farms, Wisconsin

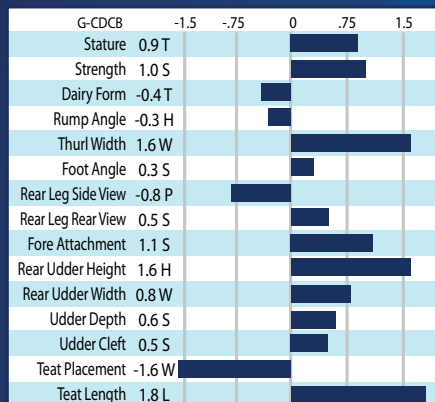


54BS539 JO-DEE NEMO

# RICHARD<sup>ET</sup> \*TM

Nemo x Ensign x Banker

REG-68155420 ■ aAa 453 ■ DMS 345 ■ Kappa Casein: BB ■ Beta Cas: A1/A2



04/21 G-CDCB PERFORMANCE			
MILK	FAT	PROTEIN	PPR
+1089	-1 / -.19%	+13 / -.10%	22
PROD. 98%R 675 DTRS/260 HRDS TYPE 97%R			
PL -0.1	UDC +0.77	SCS 3.05	TYPE +0.5
Conception (SCR) +0.7		SCR Rel. 79%	
Milking Speed 104		Cow Livability -1.4	
CE 2.9%	NM\$ -\$17	DPR -1.1	MOB +0.3

Sire: **JO-DEE PRELUDE NEMO ET** \*TM

Dam: **JO-DEE ENSIGN ROSEBUD** '2E 93 E 92 MS'

5-11 365d 2x 30,280 3.6 1,085 3.3 988  
ALL-AMERICAN 2013 & 2x HM ALL-AMERICAN  
5x NOMINATED ALL-AMERICAN

MGD: **JO-DEE BANKER ROSE** '2E 92 E 92 MS'  
3-09 365d 2x 33,080 4.1 1,347 3.3 1,102  
Lifetime: 2,194d 182,680m 7,613f 6,407p



**GIESY MANOR RICHARD FAUNA (3RD LACT.)**

ALL-AMERICAN 4-YR-OLD 2020 & HONORABLE MENTION ALL-AMERICAN JR. 3-YR-OLD 2019  
Owned by Edge-View Genetics, New York & Kentucky



**PIT-CREW RICHARD PIZZA (3RD LACT.)**

RESERVE ALL-AMERICAN 4-YR-OLD 2020 & RESERVE ALL-AMERICAN JR. 3-YR-OLD 2019  
Owned by Pit-Crew Genetics, Minnesota

G- Indicates Genomic Enhanced Evaluation



# 54BS561 HILLTOP ACRES BV **JESSE** ET \*TM

**Biver x TD x Dynasty**

REG 840003132647435 ■ aAa 315 ■ Kappa Cas BB ■ Beta Cas A1/A2

G-CDCB	-1.5	-0.75	0	.75	1.5
Stature	1.1 T				
Strength	-0.2 W				
Dairy Form	0.8 O				
Rump Angle	0.0 S				
Thurl Width	-0.3 N				
Foot Angle	0.7 S				
Rear Leg Side View	-0.5 P				
Rear Leg Rear View	-0.2 I				
Fore Attachment	1.1 S				
Rear Udder Height	1.5 H				
Rear Udder Width	0.1 W				
Udder Depth	0.6 S				
Udder Cleft	0.1 S				
Teat Placement	1.2 C				
Teat Length	-0.3 S				

## 04/21 G-CDCB PERFORMANCE

MILK	FAT	PROTEIN	PPR
+561	+14 / -.04%	+28 / +.04%	89
PROD. 83%R 29 DTRS/12 HRDS TYPE 77%R			
PL +1.6	UDC +0.80	SCS 3.12	TYPE +0.5
Conception (SCR) N/A		SCR Rel. N/A	
Milking Speed 102		Cow Livability +1.2	
CE 3.0%	NM\$ \$209	DPR +0.2	MOB +0.1

Sire: **SCHERMA BLOOMING BIVER \*TM**

Dam: **HILLTOP ACRES TD JESS ET '2E 91 E 91'**  
Lifetime: 2,247d 208,730m 9,363f 7,750p

MGD: **HILLTOP ACRES DTY JAZZY ET '3E 91 E 91 MS'**  
Lifetime: 2,704d 229,950m 11,756f 9,019p



**HILLS VALLEY JESSE BRYSHA**  
Owned by Hills Valley Farm, New York

# 54BS571 R HART ATLANTAS **ALL-IN** ETV \*TM

**Anibal x Brookings x Wonderment**

REG-840003132541841 ■ aAa 423 ■ Kappa Cas AB ■ Beta Cas A2/A2

G-CDCB	-1.5	-0.75	0	.75	1.5
Stature	0.7 T				
Strength	0.4 S				
Dairy Form	0.1 O				
Rump Angle	0.0 S				
Thurl Width	0.0 W				
Foot Angle	0.5 S				
Rear Leg Side View	0.3 S				
Rear Leg Rear View	0.5 S				
Fore Attachment	0.9 S				
Rear Udder Height	0.0 H				
Rear Udder Width	0.5 W				
Udder Depth	0.7 S				
Udder Cleft	0.9 S				
Teat Placement	1.6 C				
Teat Length	-0.9 S				

## 04/21 G-CDCB PERFORMANCE

MILK	FAT	PROTEIN	PPR
+328	+19 / +.02%	+19 / +.03%	109
PROD. 81%R 24 DTRS/14 HRDS TYPE 77%R			
PL +2.5	UDC +0.81	SCS 2.81	TYPE +0.5
Conception (SCR) N/A		SCR Rel. N/A	
Milking Speed 98		Cow Livability +0.7	
CE 1.9%	NM\$ \$261	DPR +1.7	MOB +0.3

Sire: **SCHARZ BS VIGOR ANIBAL ET \*TM**

Dam: **R HART BROOKINGS ATLANTA**  
'2E 91 E 93 MS'

1-11 340d 2x 18,660 4.3 796 3.6 678  
3-01 313d 2x 27,810 4.7 1,295 3.6 1,002  
4-02 305d 2x 29,230 4.5 1,303 3.5 1,016



#5 \$NM (PROVEN)



**TRIANGLE ACRES ALL IN PARMESAN**  
Owned by Trianlge Acres, Illinois

#1 SCR

# 54BS509 SHILOH BROOKINGS **CADENCE** ET \*TM

**Brookings x Wonderment x Pronto**

REG-71130650 ■ aAa 156 ■ DMS 345 ■ Kappa Cas BB ■ Beta Cas A1/A2

G-IB	-1.5	-0.75	0	.75	1.5
Stature	-0.1 S				
Strength	0.1 S				
Dairy Form	0.2 O				
Rump Angle	0.1 S				
Thurl Width	0.1 W				
Foot Angle	-0.2 L				
Rear Leg Side View	0.4 S				
Rear Leg Rear View	0.4 S				
Fore Attachment	0.7 S				
Rear Udder Height	0.3 H				
Rear Udder Width	0.9 W				
Udder Depth	-0.2 D				
Udder Cleft	0.0 S				
Teat Placement	0.1 C				
Teat Length	-0.1 S				

## 04/21 G-IB-M/US PERFORMANCE

MILK	FAT	PROTEIN	PPR
+659	+26 / +.00%	+28 / +.02%	79
PROD. 99%R 3,700 DTRS/1,749 HRDS TYPE 98%R			
PL +1.7	UDC +0.49	SCS 2.85	TYPE +0.6
Conception (SCR) +3.6		SCR Rel. 90%	
Milking Speed 106		Cow Livability -1.3	
CE 1.9%	NM\$ \$218	DPR -1.6	MOB +0.2

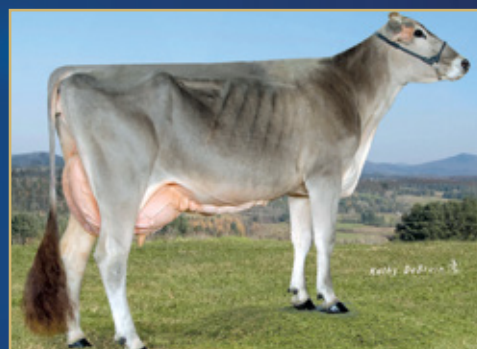
Sire: **R N R PAYOFF BROOKINGS ET \*TM**

Dam: **SUN-MADE SD WONDER BUFFY ET 'V 88'**  
2-00 344d 3x 25,780 4.8 1,247 3.6 925  
4-03 279d 3x 35,470 3.9 1,369 3.4 1,199

MGD: **FRONT LINE PRONTO BOUNTY ET 'E 90'**  
3-02 365d 2x 32,110 4.2 1,335 3.5 1,110



#1 SCR & #4 TYPE (TIED) (PROVEN)



**TWINKLE-HILL CADENCE OLIVEA 1233**  
NOMINATED ALL AMERICAN JR. 3 YEAR OLD 2020  
Owned by Twinkle-Hill Farm, Wisconsin

G- Indicates Genomic Enhanced Evaluation

# Sires in Waiting



**SUN-MADE HP SUPREME PIXEL ET  
DAM OF 54BS580 PHANTOM**  
Owned by Voegeli Farms, Wisconsin



**TRIANGLE ACRES DIRK JUPITER  
DAM OF 54BS582 JUKE**  
Owned by Triangle Acres, Illinois

POWERED BY  
**IntelliGen™**  
TECHNOLOGIES

Preferred Sex™ semen is produced with IntelliGen™ Technologies. The IntelliGen™ Technologies process for sexed bovine genetics does not subject cells to the high pressures, electric currents and shear forces used in other sexed semen processes. The result is a sexed semen product that helps our customers maximize their profitability and reach their end goals in a fast and efficient manner. Look for the IntelliGen™ label for sires with Preferred Sex semen from this state-of-the-art technology.

**LOOK FOR THIS SYMBOL FOR  
NGG PREFERRED SEX SEMEN  
POWERED BY INTELLIGEN**



54BS587 Kulp-Gen Hampton **ALLBRIGHT** \*TM  
Reg# 840003143858239 CE% 2.0  
aAa: 234 Kappa Cas: AB Beta Casein: A2/A2  
S: Jo Lane Dario Hampton ET \*TM  
D: BMG Gimme All Your Lovin' V 89 E 90 MS' @ 2 yr.  
2-08 365d 2x 29,112 4.1 1,188 3.2 936

54BS594 R-Hart HA **AVIATOR** ET \*TM  
Reg# 840003151300943 CE% 2.4  
aAa: 645 Kapp Cas: BB Beta Casein: A1/A2  
S: Vetschs Nesta Calvin ET \*TM  
D: R-Hart Anibal Astrid 'E 91 E 91 MS'  
3-01 365d 2x 23,389 3.9 784 3.2 633

54BS572 Kulp-Terra **CASHMERE** ET \*TM  
Reg# 840003133152826 CE% 2.6  
aAa: 243 Kappa Cas: AB Beta Casein: A1/A2  
S: Scharz BS Vigor Anibal ET \*TM  
D: Voelkers Brook Cara 'E 91 E 91 MS'  
2-06 321d 2x 24,779 4.4 1,090 3.5 871

54BS590 Cozy Nook Tonka **CATAPULT** \*TM  
Reg# 840003145184030 CE% 2.0  
aAa: 315 Kappa Cas: BB Beta Casein: A1/A2  
S: Cozy Nook Driver Tonka \*TM  
D: Cozy Nook Etlar Calypso 'V 88 V 88 MS'  
4-09 365d 2x 44,387 4.1 1,793 3.3 1,479

54BS585 Kulp-Terra Daryou **CLIFF** ET \*TM  
Reg# 840003143858205 CE% 2.0  
aAa: 243 Kappa Cas: AB Beta Casein: A1/A2  
S: Hilltop Acres B Daredevil ET \*TM  
D: Voelkers Brook Cara 'E 91 E 91 MS'  
2-06 321d 2x 24,779 4.4 1,090 3.5 871

54BS578 Hilltop Acres D **DEFENDER** ET \*TM  
Reg# 840003138790772 CE% 2.8  
aAa: 312 Kappa Cas: BB Beta Casein: A2/A2  
S: Hilltop Acres B Daredevil ET \*TM  
D: Hilltop Acres Biver Date 'V 87 V 87 MS'  
1-11 365d 3x 30,292 4.3 1,312 3.6 1,097

54BS596 Hilltop Acres Dynamite **DIEGO** ET \*TM  
Reg# 68194906 CE% 2.2  
aAa: 423 Kappa Cas: BB Beta Casein: A2/A2  
S: La Rainbow Bfly Dynamite ETV \*TM  
D: Hilltop Acres Gln Dignity ET 'E 90'  
Lifetime: 1,289d 104,311m 4,878f 3,800p

54BS583 Switzer Tals Drdvl **DOBOY** ET \*TM  
Reg# 840003133889643 CE% 2.0  
aAa: 261 Kappa Cas: BB Beta Casein: A1/A2  
S: Hilltop Acres B Daredevil ET \*TM  
D: Switzer Tals Cadence Donay ET 'V 86 V 86 MS'  
2-02 365d 2x 28,100 4.5 1,275 3.4 966

54BS598 HF **DRAMATIC** ET \*TM  
Reg# 840003205068697 CE% 2.3  
aAa: 216 Kappa Cas: BB Beta Casein: A2/A2  
S: Hilltop Acres D Defender ET \*TM  
D: HF Cadence Dream ET 'E 90 E 90 MS'  
4-07 325d 2x 26,480 4.4 1,171 3.3 861

54BS602 Brown Heaven C **FIRST CHOICE** ET \*TM  
Reg# 111164959 CE% 2.9  
aAa: 354 Kappa Cas: AB Beta Casein: A2/A2  
S: Vetschs Nesta Calvin ET  
D: Brown Heaven J Fancy 'E 90 E 93 MS'  
4-10 365d 2x 35,470 4.9 1,753 3.6 1,276  
Nominated All American Yrlg. in Milk 2015

54BS589 Trout Run Hilltop **JAGER** ETV \*P \*TM  
Reg# 840003145411759 CE% 1.9  
aAa: 321 Kappa Cas: BB Beta Casein: A2/A2  
S: La Rainbow Bfly Dynamite ETV \*TM  
D: Trout Run Driver Jan P ET 'E 90 E 91 MS'  
4-00 363d 3x 38,696 5.1 1,990 3.6 1,403

54BS582 Triangle Acres Carter **JUKE** \*TM  
Reg# 840003139214232 CE% 2.8  
aAa: 246 Kappa Cas: AB Beta Casein: A1/A2  
S: Voelkers TD Carter \*TM  
D: Triangle Acres Drk Jupiter 'E 90 E 91 MS'  
2-11 365d 2x 23,334 4.3 1,012 3.7 856

54BS586 Double W **KADE** \*NP \*TM  
Reg# 68186608 CE% 2.0  
aAa: 432 Kappa Cas: BB Beta Casein: A2/A2  
S: Trout Run Driver Jay P ET \*TM (D)  
D: Double W Thunder Kaddie 'V 88 V 88 MS'  
2-01 269d 3x 21,390 4.9 1,058 3.4 732

54BS593 La Rainbow Bfly **LIGHTNING** ET \*TM  
Reg# 840003129321146 CE% 2.3  
aAa: 231 Kappa Cas: AB Beta Casein: A2/A2  
S: Kulp-Terra Lucky Carl ET \*TM  
D: La Rainbow Bfly Skylight ET 'E 91'  
1-08 317d 2x 19,490 4.4 862 3.4 671

54BS591 Hilltop Acres Tk **MERICA** ET \*TM  
Reg# 840003145411775 CE% 1.2  
aAa: 342 Kappa Cas: BB Beta Casein: A2/A2  
S: Cozy Nook Driver Tonka \*TM  
D: Hilltop Acres Bk Maui ET 'E 91 E 91 MS'  
Lifetime: 1,860d 200,240m 8,065f 7,139p

54BS579 Hilltop Acres NW **MUSTANG** \*TM  
Reg# 840003138790795 CE% 2.4  
aAa: 234 Kappa Cas: AB Beta Casein: A1/A2  
S: Norwin  
D: Hilltop Acres Bk Mara 'V 89 E 90 MS'  
Lifetime: 1,279d 121,183m 4,659f 4,180p

54BS580 V B Biver **PHANTOM** ET \*TM  
Reg# 68182661 CE% 2.6  
aAa: 231 Kappa Cas: BB Beta Casein: A2/A2  
S: Scherma Blooming Biver ET  
D: Sun-Made HP Supreme Pixel ET 'E 93 E 93 MS'  
5-07 365d 2x 32,937 5.5 1,808 3.4 1,122

54BS599 Hilltop Acres **POWERBALL** ETV \*TM  
Reg# 840003151301008 CE% 2.5  
aAa: 423 Kappa Cas: BB Beta Casein: A2/A2  
S: Cozy Nook Daredevil Toby ET \*TM  
D: Hilltop Acres Cad Paula 'V 87 V 88 MS'  
1-11 365d 3x 32,990 4.6 1,522 3.8 1,257

54BS574 Triangle Acres Fact **PROSPER** \*TM  
Reg# 840003135193068 CE% 2.3  
aAa: 342 Kappa Cas: BB Beta Casein: A2/A2  
S: Kiba Anibal Fact ET \*TM  
D: Triangle Acres BK Poplar ET 'V 88 E 90 MS'  
3-02 365d 2x 28,924 4.1 1,175 3.8 1,105

54BS581 Jo-Dee Royal Hill **RASTA** ET \*TM  
Reg# 840003135087427 CE% 2.4  
aAa: 342 Kappa Cas: BB Beta Casein: A2/A2  
S: Schmaun BS Gordon Glenn ET \*TM  
D: Jo-Dee Nemo Risky 'E 94 E 95 MS'  
6-06 365d 2x 33,010 3.8 1,264 3.0 1,002  
Res All American '14 & HM All Americ'12, '13 & '16

54BS601 La Rainbow Sweet **SALSA** ETV \*TM  
Reg# 840003200520220 CE% 2.4  
aAa: 342 Kappa Cas: BB Beta Casein: A1/A2  
S: Kulp-Terra Lucky Carl ET \*TM  
D: La Rainbow Sweet Silk ETV 'E 91 E 91 MS'  
3-07 365d 2x 26,896 5.3 1,425 3.5 930

54BS597 Pine-Tree Svr **SANDSTORM** ETV \*TM  
Reg# 840003150687278 CE% 2.5  
aAa: 534 Kappa Cas: BB Beta Casein: A1/A2  
S: La Rainbow Sweet Silver ET \*TM  
D: Nor-Bert Biver Sassy 'V 87 V 88 MS'  
2-01 321d 2x 21,788 4.8 1,038 3.7 811

54BS577 La Rainbow Sweet **SILVER** ET \*TM  
Reg# 840003129321124 CE% 2.4  
aAa: 624 Kappa Cas: BB Beta Casein: A1/A2  
S: Reads Driver Kannon \*TM  
D: La Rainbow Sweet Silk ETV 'E 91 E 91 MS'  
3-07 365d 2x 26,896 5.3 1,425 3.5 930

54BS603 Kulp-Terra **SILVER COIN** \*TM  
Reg# 840003207411899 CE% 2.3  
aAa: 162 Kappa Cas: BB Beta Casein: A1/A2  
S: La Rainbow Sweet Silver ET \*TM  
D: Kulp-Terra Casandra ET 'E 91 E 93 MS'  
2-09 365d 2x 24,753 4.2 1,069 3.6 896

54BS604 La Rainbow Sweet **SPARK** \*NP \*TM  
Reg# 840003200520226 CE% 2.4  
aAa: 165 Kappa Cas: BB Beta Casein: A2/A2  
S: Double W Kade \*NP \*TM  
D: La Rainbow Sweet Siesta ET 'E 90 E 90 MS'  
1-10 306d 2x 18,990 4.4 833 3.3 630

54BS584 Cozy Nook Daredevil **TOBY** ET \*TM  
Reg# 840003138129971 CE% 2.4  
aAa: 234 Kappa Cas: BB Beta casein: A1/A2  
S: Hilltop Acres B Daredevil ET \*TM  
D: Cozy Nook Pslj Treacherous ET 'E 90 E 91 MS'  
3-01 365d 2x 32,575 4.8 1,550 3.8 1,236

54BS566 Holyland **TREASURY** 591 ET \*TM  
Reg# 840003132453223 CE% 2.6  
aAa: 135 Kappa Cas: AB Beta Casein: A2/A2  
S: Scharz BS Vigor Anibal ET \*TM  
D: Holyland Treasre 2352 ET 'V85 V85' @ 2 yrs.  
1-09 305d 3x 25,132 4.3 1,078 3.4 860

54BS595 Cozy Nook Carl **TREK** \*TM  
Reg# 840003148184063 CE% 2.9  
aAa: 243 Kappa Cas: BB Beta casein: A2/A2  
S: Kulp-Terra Lucky Carl ET \*TM  
D: Cozy Nook Pslj Treacherous ET 'E 90 E 91 MS'  
3-01 365d 2x 32,575 4.8 1,550 3.8 1,236

54BS567 Hills Valley R **WATCHOUT** ET \*TM  
Reg# 840003132145767 CE% 3.0  
aAa: 243 Kappa Cas: AB Beta Casein: A2/A2  
S: Jo-Dee Nemo Richard \*TM  
D: Fairdale Supreme Wow ET 'V 86 E 90 MS'  
2-03 365d 2x 19,441 4.8 933 3.6 700

54BS600 Top Acres Cade **WINRITE** ETV \*TM  
Reg# 68201687 CE% 3.0  
aAa: 324 Kappa Cas: BB Beta casein: A2/A2  
S: Shiloh Brookings Cadence ET \*TM  
D: Top Acres Supreme Wizard ET 'E 95 E 94 MS'  
Lifetime: 2,557d 202,535m 11,043f 7,077p  
Grand Champion World Dairy Expo 2017

## DISCLAIMER OF WARRANTY AND LIMITATION OF LIABILITY

Availability of all semen is subject to change without notice. Semen is collected, processed and stored in accordance with sound recognized practices. Neither New Generation Genetics, Inc. (NGG) nor owners of bulls leased to NGG nor its employees or agents shall be liable after delivery for any injury or disease caused to any persons, animals or property through the use or handling of the semen. NGG does not guarantee semen to be free of genetic recessives. NGG does not guarantee the fertility capacity of any semen. No warranty of any kind is inferred except to sell and convey good title. Any other warranty is hereby disclaimed. Should a breach of any NGG warranty be deemed by applicable court of law, the purchaser's exclusive remedy shall be limited to replacement of semen or refund of payment at NGG's option and NGG shall not be liable for any consequential or additional damages or expenses.

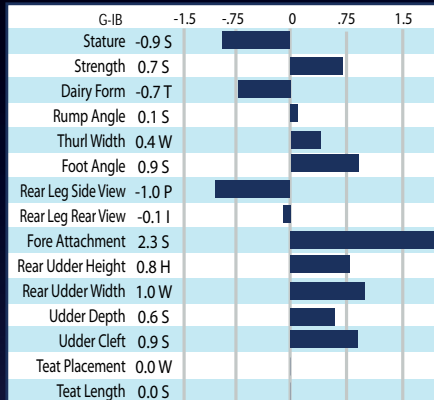


196BS55878 PORTMANN BS BAYS **JONMAR**\*TM

Arrow Bays x Smart x Glenn

#3 PPR (TIED) (GENOMIC)

REG 120145720068 ■ aAa 156423 ■ Kappa Cas BB ■ Beta Cas A2/A2



**04/21 G-IB-M/US PERFORMANCE**

MILK	FAT	PROTEIN	PPR
+1108	+42 / -0.1%	+38 / +.00%	181
PROD. 60%R 0 DTRS/0 HRDS TYPE 62%R			
PL +4.6	UDC +1.22	SCS 2.72	TYPE +0.4
Conception (SCR) N/A		SCR Rel. N/A	
Milking Speed 102		Cow Livability +0.6	
CE 2.4%	NM\$ \$463	DPR +1.6	MOB +0.0

Sire: **SCHERMA ARROW BAYS ET**\*TM

Dam: **PORTMANN BS SMART JESSIE ET '+83'**  
 2-11 305d 2x 19,840 3.5 702 3.6 708  
 R.I.P 4-03 182d 2x 13,500 3.2 425 3.4 453

MGD: **GS ALLIANCE GLENN J LO 'V 88 V 88 MS'**  
 2-03 305d 2x 17,813 4.1 735 3.6 640  
 3-07 305d 2x 21,952 4.1 882 3.6 774  
 Lifetime: 54,250m 2,229f 1,960p

3rd Dam: **JOLAHOFS VIGOR JOLA 'V 89 E 90 MS'**  
 Lifetime: 1,646d 96,859m 4,061f 3,388p  
 2nd Place European Championship Show 2012  
 1st Place IGBS Show 2013



DAM: PORTMANN BS SMART JESSIE ET



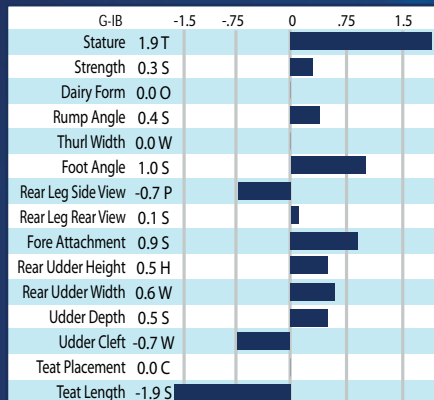
MGD: GS ALLIANCEGLENN J LO

180BS95946 **PACTOLE**\*TM

Blower x Fact x Zephir

REG-5356268551 ■ aAa 243615 ■ Kappa Casein: BB ■ Beta Cas: A2/A2

#1 PPR, #2 NM\$ & 5 PROTEIN (GENOMIC)



**04/21 G-IB-M/US PERFORMANCE**

MILK	FAT	PROTEIN	PPR
+1048	+49 / +.03%	+50 / +.06%	197
PROD. 58%R 0 DTRS/0 HRDS TYPE 59%R			
PL +3.9	UDC +0.40	SCS 2.74	TYPE +0.2
Conception (SCR) N/A		SCR Rel. N/A	
Milking Speed 100		Cow Livability -0.3	
CE 3.0%	NM\$ \$527	DPR +2.1	MOB +0.0

Sire: **AG BLOOMING BLOWER**\*TM

Dam: **FACT MUSOLDE 'V 85 V 86 MS'**  
 2-03 371d 2x 19,886 4.4 876 3.7 739  
 R.I. P. 3-05 232d 19,197 4.3 818 3.6 686

MGD: **JISOLDE '+83 +83 MS'**  
 4-07 285d 2x 20,178 4.3 847 3.9 741  
 Lifetime: 1,242d 78,925m 3,577f 3,027p

3rd Dam: **ISOLDE '+84 V 85 MS'**  
 7-10 409d 2x 27,630 4.7 1,289 3.9 1,023  
 Lifetime: 2,338d 133,227m 6,100f 5,049p



PACTOLE



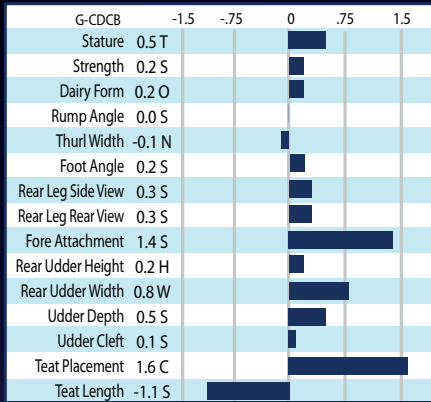
DAM: FACT MUSOLDE 'V 85 V 86 MS'

**SEMEN RELEASE**  
**6/6/21**

54BS603 KULP-TERRA **SILVER COIN** \*TM

Silver x Fact x Brookings

REG 840003207411899 ■ aAa 162 ■ Kappa Cas BB ■ Beta Cas A1/A2



**04/21 G-CDCB PERFORMANCE**

MILK	FAT	PROTEIN	PPR
+689	+26 / -.01%	+31 / +.03%	135
PROD. 63%R 0 DTRS/0 HRDS TYPE 64%R			
PL +3.3	UDC +0.87	SCS 2.83	TYPE +0.5
Conception (SCR) N/A		SCR Rel. N/A	
Milking Speed 109		Cow Livability -0.3	
CE 2.3%	NM\$ \$328	DPR +1.4	MOB +0.3

Sire: **LA RAINBOW SWEET SILVER ET** \*TM

Dam: **KULP-TERRA CASANDRA ET**  
 'E 91 E 93 MS'  
 1-09 275d 2x 11,530 4.2 490 3.6 412  
 2-09 365d 2x 24,753 4.2 1,069 3.6 896  
 R.I.P. 4-00 154d 2x 14,107 4.4 627 3.6 511

MGD: **VOELKERS BROOKINGS CARA**  
 'E 92 E 90 MS'  
 2-06 305d 2x 23,300 4.4 1,023 3.5 812  
 6-05 305d 2x 39,880 4.5 1,798 3.4 1,345  
 R.I.P. 8-02 149d 2x 23,203 5.0 1,157 3.3 733



**KULP-TERRA SILVER COIN** \*TM



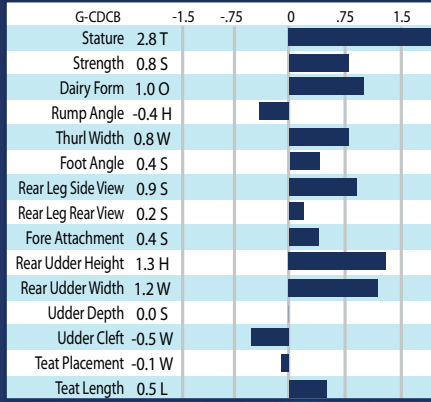
**MGD: VOELKERS BROOKINGS CARA**  
 'E 92 E 90 MS'

Genomic Gem **SALSA** ETV \*TM

54BS601 LA RAINBOW SWEET **SALSA** ETV \*TM  
 Lucky Carl x Cadence x Durham

#2 TYPE (TIED) (GENOMIC)

REG-840003200520220 ■ aAa 342 ■ Kappa Cas BB ■ Beta Cas A1/A2



**04/21 G-CDCB PERFORMANCE**

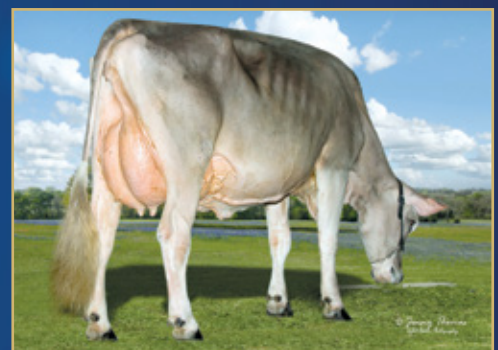
MILK	FAT	PROTEIN	PPR
+1325	+43 / -.05%	+37 / -.03%	99
PROD. 65%R 0 DTRS/0 HRDS TYPE 65%R			
PL -0.4	UDC +0.61	SCS 3.07	TYPE +0.9
Conception (SCR) N/A		SCR Rel. N/A	
Milking Speed 97		Cow Livability -2.1	
CE 2.4%	NM\$ \$235	DPR -1.4	MOB +0.2

Sire: **KULP-TERRA LUCKY CARL ET** \*TM

Dam: **LA RAINBOW SWEET SILK ETV**  
 'E 91 E 91 MS'  
 1-09 340d 2x 24,567 5.1 1,247 3.9 953  
 3-07 365d 2x 26,896 5.3 1,425 3.5 930  
 5-00 107d 2x 8,277 4.4 363 3.4 277



**LA RAINBOW SWEET SALSA ETV** \*TM



**DAM: LA RAINBOW SWEET SILK ETV**  
 'E 91 E 91 MS'



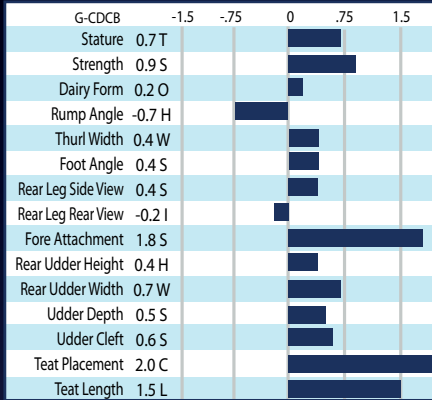
Genomic Gen **DPRSTAR** #1PPR #1NM\$ #1MILK #1UDC

54BS608 TROUT HILLTOP **JORDY**\*NP ETV \*TM

Victor \*P x Driver x Andy \*NP

#1 PPR, #1 NM\$, #1 MILK, #1 UDC (TIED), #2 FAT & #3 NM\$ (GENOMIC) (POLLED)

REG 840003215414562 ■ aAa 324 ■ Kappa Cas BB ■ Beta Cas A2/A2



04/21 G-CDCB PERFORMANCE			
MILK	FAT	PROTEIN	PPR
+724	+43 / +.06%	+38 / +.06%	155
PROD. 64%R 0 DTRS/0 HRDS TYPE 64%R			
PL +2.0	UDC +1.12	SCS 2.97	TYPE +0.4
Conception (SCR) N/A		SCR Rel. N/A	
Milking Speed 96		Cow Livability +0.8	
CE 2.6%	NM\$ \$380	DPR +1.1	MOB -0.1

Sire: **VICTOR P ET** \*TM

Dam: **TROUT RUN JAN P ET** 'E 90 E 91 MS'  
 2-00 365d 3x 27,430 5.1 1,389 3.9 1,059  
 4-00 365d 3x 38,950 5.1 2,003 3.6 1,413  
 Lifetime: 1,757d 157,422m 7,950f 6,017p

MGD: **TROUT RUN JILL ET P** 'V 85 V 86 MS'  
 2-00 323d 2x 16,040 4.9 788 3.6 573  
 3-00 312d 2x 18,440 4.8 887 3.4 627  
 4-00 307d 2x 19,300 4.8 926 3.3 634



DAM: TROUT RUN DRIVER JAN P ET 'E 90 E 1 MS'



TROUT HILLTOP JORDY ETV \*NP

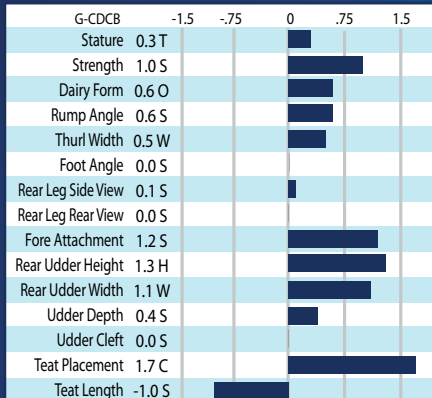
Genomic Gen **CONCEPTION FIRST** #1TYPE #1UDC

54BS604 LA RAINBOW SWEET **SPARK**\*NP ETV \*TM

Kade \*NP x Daredevil x Cadence

#1 TYPE, #1 UDC (TIED) & #2 MILK (GENOMIC) (POLLED)

REG-840003200520226 ■ aAa 165 ■ Kappa Cas BB ■ Beta Cas A2/A2



04/21 G-CDCB PERFORMANCE			
MILK	FAT	PROTEIN	PPR
+656	+15 / -.05%	+18 / -.02%	60
PROD. 61%R 0 DTRS/0 HRDS TYPE 62%R			
PL -0.2	UDC +1.12	SCS 3.12	TYPE +0.8
Conception (SCR) N/A		SCR Rel. N/A	
Milking Speed 111		Cow Livability -1.5	
CE 2.4%	NM\$ \$110	DPR +0.0	MOB +0.2

Sire: **DOUBLE W KADE** \*NP \*TM

Dam: **LA RAINBOW SWEET SIESTA ET** 'E 90 E 90 MS'  
 1-10 306d 2x 18,990 4.4 833 3.3 630  
 R.I.P. 2-09 233d 2x 17,089 4.1 705 3.4 579

MGD: **LA RAINBOW SWEET SILK ETV** 'E 91 E 91 MS'  
 1-09 340d 2x 24,567 5.1 1,247 3.9 953  
 3-07 365d 2x 26,896 5.3 1,425 3.5 930  
 5-00 107d 2x 8,277 4.4 363 3.4 277



DAM: LA RAINBOW DAREDEVIL SWEET SIESTA ET 'E 90 E 90 MS' (1ST LACT. PHOTO)



MGD: LA RAINBOW SWEET SILK 2ND LACT.



Genomic Gen

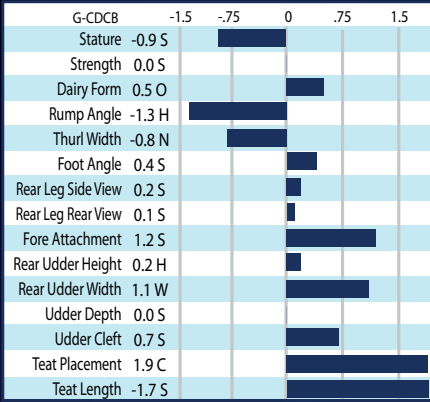
CONCEPTION FIRST.

# SILVER ET \*TM

54BS577 LA RAINBOW SWEET

Kannon x Cadence x Durham

REG 840003129321124 ■ aAa 624 ■ Kappa Cas BB ■ Beta Cas A1/A2



04/21 G-CDCB PERFORMANCE			
MILK	FAT	PROTEIN	PPR
+631	+20 / -0.2%	+22 / +.00%	95
PROD. 79%R 19 DTRS/11 HRDS TYPE 71%R			
PL +2.0	UDC +1.03	SCS 2.93	TYPE +0.4
Conception (SCR) -1.3		SCR Rel. 85%	
Milking Speed 107		Cow Livability +0.6	
CE 2.4%	NM\$ \$250	DPR +0.4	MOB +0.1

Sire: **READS DRIVER KANNON \*TM**

Dam: **LA RAINBOW SWEET SILK ETV 'E91 E91 MS'**  
 1-09 340d 2x 24,567 5.1 1,247 3.9 953  
 3-07 365d 2x 26,896 5.3 1,425 3.5 930  
 5-00 107d 2x 8,277 4.4 363 3.4 277



**HILLS VALLEY SILVER WINSLOW**  
Bred by Hills Valley Farm, New York



**LA RAINBOW SILVER SWEET VIBRANT**  
Owned by La Rainbow Farms, Ohio



Genomic Gen



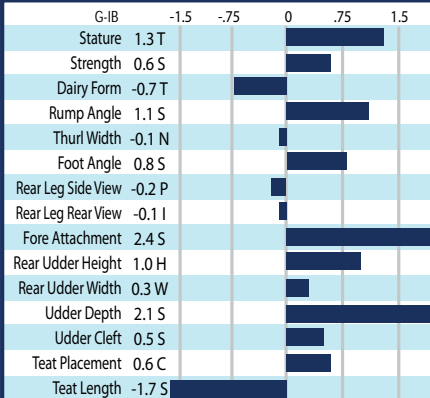
CONCEPTION FIRST.

# O MALLEY \*TM

180BS94448

Biver Bender x Glarus x President

REG 4427424483 ■ aAa 423561 ■ Kappa Cas BB ■ Beta Cas A2/A2



04/21 G-CDCB PERFORMANCE			
MILK	FAT	PROTEIN	PPR
+587	+35 / +.05%	+29 / +.04%	156
PROD. 63%R 0 DTRS/0 HRDS TYPE 60%R			
PL +3.6	UDC +1.21	SCS 2.87	TYPE +0.5
Conception (SCR) N/A		SCR Rel. N/A	
Milking Speed 101		Cow Livability +0.2	
CE 2.0%	NM\$ \$409	DPR +2.4	MOB +0.0

Sire: **P LIVELLO BIVE PAYS BENDER ET \*TM**

Dam: **GLARUS LILIPUS 'V 87 V 88 MS'**  
 2-04 346d 2x 16,583 4.8 789 3.7 621  
 3-06 321d 2x 20,893 4.5 940 3.6 752

MGD: **PRESIDENT HAWAIENNE 'V 86'**  
 6-00 305d 2x 21,843 4.2 910 3.8 828



**DAM: LILIPUS**



**O MALLEY**



Genomic Gem

54BS602 BROWN HEAVEN C **FIRST CHOICE** ET \*TM

Calvin x Jongleur x Glenn

REG-111164959 ■ aAa 354 ■ Kappa Cas AB ■ Beta Cas A2/A2



G-CDCB	-1.5	-.75	0	.75	1.5
Stature	0.8 T				
Strength	0.9 S				
Dairy Form	-0.8 T				
Rump Angle	1.6 S				
Thurl Width	0.2 W				
Foot Angle	0.0 S				
Rear Leg Side View	0.2 S				
Rear Leg Rear View	-0.1 I				
Fore Attachment	2.0 S				
Rear Udder Height	0.9 H				
Rear Udder Width	0.3 W				
Udder Depth	1.2 S				
Udder Cleft	1.0 S				
Teat Placement	1.2 C				
Teat Length	-1.6 S				

04/21 G-CDCB PERFORMANCE			
MILK	FAT	PROTEIN	PPR
-16	-6 / -.02%	+0 / +.00%	32
PROD. 63%R 0 DTRS/0 HRDS TYPE 62%R			
PL +0.7	UDC +1.18	SCS 3.02	TYPE +0.3
Conception (SCR) N/A		SCR Rel. N/A	
Milking Speed 99		Cow Livability +0.5	
CE 2.9%	NM\$ \$34	DPR +1.3	MOB +0.0

Sire: **VETSCHS NESTA CALVIN ET**

Dam: **BROWN HEAVEN J FANCY ET 'EX 91 EX 94 MS'**  
04-10 365d 2X 35,470 4.9 1,753 3.6 1,276

MGD: **BROWN HEAVEN GLENN FANTASY 'EX 97 EX 97 MS'**



MGD: **BROWN HEAVEN GLENN FANTASY 'EX 97 EX 97 MS'**  
2x GRAND CHAMPION WORLD DAIRY EXPO,  
4x ALL-AMERICAN & 3X ALL-CANADIAN



#5 TYPE (TIED) (GENOMIC)

Genomic Gem

54BS600 TOP ACRES CADE **WINRITE** ETV

Cadence x Supreme x Andre

REG 68201687 ■ aAa 324 ■ Kappa Cas BB ■ Beta Cas A2/A2

G-CDCB	-1.5	-.75	0	.75	1.5
Stature	0.8 T				
Strength	-0.3 W				
Dairy Form	1.0 O				
Rump Angle	-0.5 H				
Thurl Width	0.7 W				
Foot Angle	0.4 S				
Rear Leg Side View	0.2 S				
Rear Leg Rear View	0.4 S				
Fore Attachment	0.6 S				
Rear Udder Height	0.6 H				
Rear Udder Width	0.6 W				
Udder Depth	0.2 S				
Udder Cleft	-0.2 W				
Teat Placement	-0.1 W				
Teat Length	-1.4 S				

04/21 G-CDCB PERFORMANCE			
MILK	FAT	PROTEIN	PPR
+451	+20 / +.01%	+16 / +.00%	59
PROD. 69%R 0 DTRS/0 HRDS TYPE 70%R			
PL +0.9	UDC +0.41	SCS 2.94	TYPE +0.6
Conception (SCR) N/A		SCR Rel. N/A	
Milking Speed 108		Cow Livability +0.1	
CE 3.0%	NM\$ \$170	DPR -0.7	MOB +0.4

Sire: **SHILOH BROOKINGS CADENCE ET \*TM**

Dam: **TOP ACRES SUPREME WIZARD ET '2E 95 E 94 MS'**  
Lifetime: 2,557d 202,535m 11,043f 7,077p



DAM: **TOP ACRES SUPREME WIZARD ET '2E 95 E 94 MS'**  
GRAND CHAMP WORLD DAIRY EXPO 2017  
2X ALL-AMERICAN & 3X RES. ALL-AMERICAN



#4 TYPE (TIED) (GENOMIC)

Genomic Gem

54BS581 JO-DEE ROYAL HILL **RASTA** ET \*TM

Glenn x Nemo x Ensign

REG-840003135087427 ■ aAa 342 ■ Kappa Cas BB ■ Beta Cas A2/A2

G-CDCB	-1.5	-.75	0	.75	1.5
Stature	2.4 T				
Strength	1.8 S				
Dairy Form	-0.2 T				
Rump Angle	-0.6 H				
Thurl Width	1.0 W				
Foot Angle	0.7 S				
Rear Leg Side View	-0.8 P				
Rear Leg Rear View	0.3 S				
Fore Attachment	1.8 S				
Rear Udder Height	0.4 H				
Rear Udder Width	-0.2 N				
Udder Depth	1.4 S				
Udder Cleft	1.2 S				
Teat Placement	-0.2 W				
Teat Length	-1.3 S				

04/21 G-CDCB PERFORMANCE			
MILK	FAT	PROTEIN	PPR
+15	-17 / -.08%	-2 / -.01%	10
PROD. 67%R 0 DTRS/0 HRDS TYPE 69%R			
PL +2.3	UDC +0.77	SCS 3.09	TYPE +0.7
Conception (SCR) -0.5		SCR Rel. 69%	
Milking Speed 105		Cow Livability +1.3	
CE 2.4%	NM\$ -\$4	DPR +0.5	MOB +0.1

Sire: **SCHAMAUN BS GORDON GLENN ET \*TM**

Dam: **JO-DEE NEMO RISKY '2E 94 E 94 MS'**  
Lifetime: 1,968d 143,950m 5,288f 4,644p  
RES. A-A 2014 & HM A-A 2012, '13 & '16

MGD: **JO-DEE ENSIGN ROSEBUD '2E 93 E 92 MS'**  
Lifetime: 2,700d 194640m 6,920f 6,359p  
ALL-AMERICAN 2013 & 2x HM ALL-AMERICAN



ABS RASTA STORMY  
Owned by Alexis Blankenberg, Wisconsin

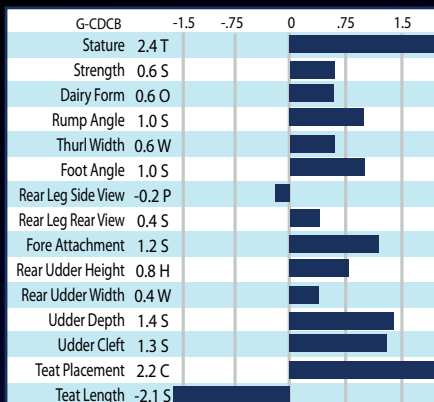
Genomic Gem

54BS582 TRIANGLE ACRES CARTER **JUKE** \*TM



**Carter x Dirk x Pursue**

REG 840003139214232 ■ aAa 246 ■ Kappa Cas AB ■ Beta Cas A1/A2



04/21 G-CDCB PERFORMANCE			
MILK	FAT	PROTEIN	PPR
+276	+17 / +.02%	+8 / -.01%	90
PROD. 67%R 0 DTRS/0 HRDS TYPE 69%R			
PL +4.1	UDC +1.22	SCS 2.83	TYPE +0.9
Conception (SCR) +1.5		SCR Rel. 67%	
Milking Speed 101		Cow Livability +1.3	
CE 2.8%	NM\$ \$255	DPR +0.8	MOB +0.4

Sire: **VOELKERS TD CARTER** \*TM

Dam: **TRIANGLE ACRES DIRK JUPITER**  
'EX 93 E 92 MS'

2-00 308d 2x 18,570 4.5 832 3.6 663  
2-11 365d 2x 23,334 4.3 1,012 3.7 856  
4-11 305d 2x 24,432 4.7 1,151 3.3 815

#2 TYPE (TIED) & #5 UDC (GENOMIC)



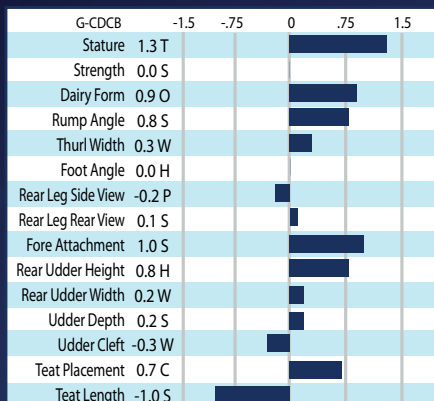
**CALI 100 JUKE RASCAL**  
Owned by Louie & Garen Oliveira, California

Genomic Gem

54BS580 V B BIVER **PHANTOM** ET \*TM

**Biver x Supreme x Dynasty**

REG 68182661 ■ aAa 231 ■ Kappa Cas BB ■ Beta Cas A2/A2



04/21 G-CDCB PERFORMANCE			
MILK	FAT	PROTEIN	PPR
+433	+37 / +.08%	+28 / +.06%	116
PROD. 68%R 0 DTRS/0 HRDS TYPE 69%R			
PL +2.0	UDC +0.49	SCS 2.98	TYPE +0.5
Conception (SCR) -3.7		SCR Rel. 58%	
Milking Speed 106		Cow Livability +0.9	
CE 2.6%	NM\$ \$319	DPR +0.4	MOB +0.2

Sire: **SCHERMA BLOOMING BIVER** \*TM

Dam: **SUN-MADE HP SUPRME PIXEL ET** '2E 94'

3-05 365d 2x 39,150 4.7 1,830 3.4 1,324  
5-07 365d 2x 32,937 5.5 1,808 3.4 1,122  
Lifetime: 1,805d 165,430m 8,499f 5,855p

MGD: **TRIANGLE ACRES POST IT TWIN** 'E 90'  
3-04 365d 2x 30,170 4.5 1,366 3.5 1,070

CONCEPTION FIRST.



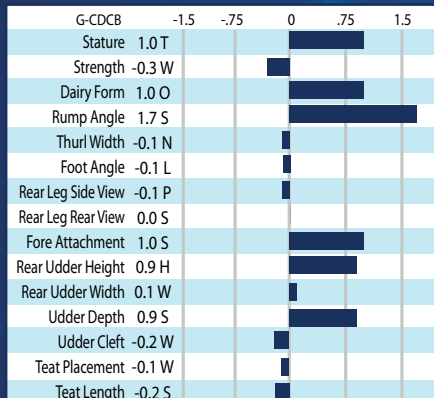
**R N R PHANTOM ALLY**  
NOMINATED ALL-AMERICAN SPRING CALF 2019  
Owned by Kaylee Cherry, Ohio

Genomic Gem

54BS599 HILLTOP ACRES **POWERBALL** ETV \*TM

**Toby x Cadence x Bush**

REG 840003151301008 ■ aAa 423 ■ Kappa Cas BB ■ Beta Cas A2/A2



04/21 G-CDCB PERFORMANCE			
MILK	FAT	PROTEIN	PPR
+488	+25 / +.02%	+27 / +.05%	110
PROD. 62%R 0 DTRS/0 HRDS TYPE 65%R			
PL +3.0	UDC +0.47	SCS 2.81	TYPE +0.5
Conception (SCR) N/A		SCR Rel. N/A	
Milking Speed 106		Cow Livability -0.4	
CE 2.5%	NM\$ \$298	DPR +0.6	MOB +0.2

Sire: **COZY NOOK DAREDEVIL TOBY ET** \*TM

Dam: **HILLTOP ACRES CAD PAULA** 'V 87 V 88 MS'  
1-11 365d 3x 32,990 4.6 1,522 3.8 1,257

MGD: **HILLTOP ACRES BUSH DENVER** '+ 83 V 85 MS'  
2-11 365d 3x 28,750 4.3 1,250 3.7 1,076  
4-03 365d 3x 33,370 4.3 1,432 3.7 1,241



**DAM: HILLTOP ACRES CAD PAULA**  
'V 87 V 88 MS'

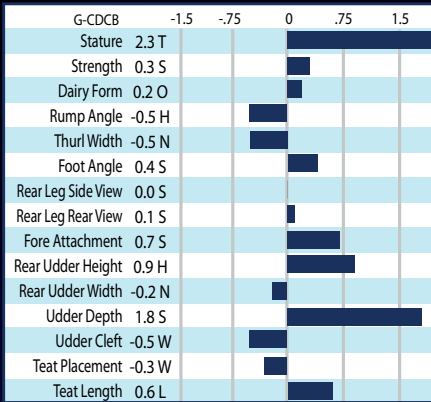


Genomic Gem

54BS595 COZY NOOK CARL **TREK**\*TM

Lucky Carl x Payssli x Pronto

REG-840003145184063 ■ aAa 243 ■ Kappa Cas BB ■ Beta Cas A2/A2



04/21 G-CDCB PERFORMANCE			
MILK	FAT	PROTEIN	PPR
+1132	+29 / -.07%	+27 / -.05%	123
PROD. 64%R 0 DTRS/0 HRDS TYPE 64%R			
PL +3.2	UDC +0.31	SCS 2.93	TYPE +0.5
Conception (SCR) +0.0		SCR Rel. 71%	
Milking Speed 105		Cow Livability +0.4	
CE 2.9%	NM\$ \$308	DPR +1.7	MOB +0.1

Sire: **KULP-TERRA LUCKY CARL ET \*TM**  
 Dam: **COZY NOOK PSLI TREACHEROUS ET 'E 90'**  
 2-01 312d 2x 24,600 4.3 1,053 3.6 879  
 5-06 344d 2x 33,544 4.3 1,453 3.6 1,221  
 MGD: **COZY NOOK PRONTO TWYLIGHT '4E 92'**  
 Lifetime: 4,094d 335,810m 14,739f 11,958p



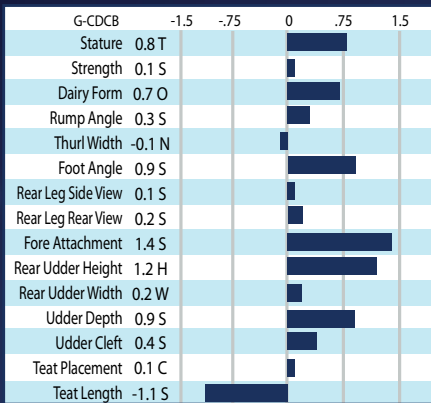
DAM: **COZY NOOK PAYSLI TREACHEROUS ET 'E 90 E 91 MS'**

Genomic Gem

54BS598 HF **DRAMATIC** ET \*TM

Defender x Cadence x Driver

REG-840003205068697 ■ aAa 216 ■ Kappa Cas BB ■ Beta Cas A2/A2



04/21 G-CDCB PERFORMANCE			
MILK	FAT	PROTEIN	PPR
+517	+19 / -.01%	+22 / +.02%	86
PROD. 61%R 0 DTRS/0 HRDS TYPE 63%R			
PL +2.7	UDC +0.79	SCS 2.86	TYPE +0.6
Conception (SCR) N/A		SCR Rel. N/A	
Milking Speed 102		Cow Livability +1.0	
CE 2.3%	NM\$ \$261	DPR -0.7	MOB +0.2

Sire: **HILLTOP ACRES D DEFENDER ET \*TM**  
 Dam: **HF CADENCE DREAM ET 'E 90 E 90 MS'**  
 1-11 345d 2x 24,000 4.1 975 3.5 833  
 3-00 365d 2x 25,390 4.5 1,150 3.5 890  
 4-07 325d 2x 26,480 4.4 1,171 3.5 926  
 R.I.P. 5-08 205d 2x 19,050 4.6 867 3.4 648

#5 TYPE (TIED) (GENOMIC)



HF **DRAMATIC ET \*TM**

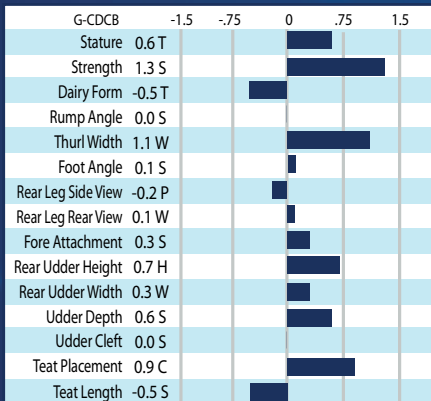
#1 DPR #1 PL #1 LIV

Genomic Gem

54BS586 DOUBLE W **KADE**\*NP\*TM

Jay P (D) x H Thunder x Faust

REG-68186608 ■ aAa 432 ■ Kappa Cas BB ■ Beta Cas A2/A2



04/21 G-CDCB PERFORMANCE			
MILK	FAT	PROTEIN	PPR
+219	+26 / +.07%	+18 / +.05%	119
PROD. 66%R 0 DTRS/0 HRDS TYPE 65%R			
PL +3.5	UDC +0.47	SCS 2.94	TYPE +0.4
Conception (SCR) -2.0		SCR Rel. 78%	
Milking Speed 106		Cow Livability +1.5	
CE 2.0%	NM\$ \$304	DPR +2.6	MOB +0.1

Sire: **TROUT RUN DR JAY PET \*TM (D)**  
 Dam: **DOUBLE W THUNDER KADDIE 'V 88 V 88 MS'**  
 2-01 269d 3x 21,390 4.9 1,058 3.4 732  
 R.I.P. 3-00 277d 3x 19,360 4.3 830 3.4 663

#1 DPR, #1 PL, #1 LIV, #2 NM\$, #3 PPR,  
 #3 TYPE (TIED) & #5 PROTEIN (GENOMIC) (POLLED)



ARTHURST **KADE PANDA \*NP**  
 Owned by Encore Genetics, Wisconsin

G- Indicates Genomic Enhanced Evaluation

# INTRODUCING...



## JOIN US IN WELCOMING NEW US SALES & PROGENY SPECIALIST **LAUREN HENDEL**

Lauren, a graduate of the University of Minnesota, joined NGG in December of 2020. She is responsible for sales and farm visits in the Midwest & West USA and will be out on the road soon! Her tasks also include picturing progeny and creating domestic and some international advertisements. Lauren's passion for Brown Swiss began on her family's dairy, Hendel Farms, of Caledonia, MN who have bred registered Brown Swiss for nearly 100 years. Lauren brings a vast experience in the A.I. industry through multiple college internships and her start in the industry after graduation. Please join us in welcoming her to the Best in Brown Swiss as she makes her first visits to your farms.



HAMPTON



LUCKY CARL

# JOIN THE REVOLUTION!



**CONCEPTION FIRST** and **DPR STARS** are our new total fertility program. This revolutionary program's aim is to help you reach your goals of increased fertility in your herd. Visit our web site to see full details on the Conception First and DPR Stars programs.



SILVER



SILVER



PO BOX 470 ■ FORT ATKINSON, WI 53538 USA ■ TEL (920) 568-0554  
DAN@BROWNSWISS.COM ■ INFO@BROWNSWISS.COM  
JAKE@BROWNSWISS.COM ■ LAUREN@BROWNSWISS.COM

[www.brownswiss.com](http://www.brownswiss.com)