

179BS16 Hilltop Acres Rokat

NITRO ETV

BS840003264521262 aAa: 234 Beta Cas: A2A2 Kappa Casein: BB
 Born: 4/14/23

Genomic Gems

RASTAROKET X SILVER X PATTON

12/2024 G-CDCB PERFORMANCE			
MILK +511	FAT +40 / +0.09%	PROTEIN +45 / +0.14%	PPR 196
PROD. 62%R N/A DTRS/N/A HRDS TYPE 65%R			
PL +5.3	UDC +1.07	SCS 2.78	TYPE +0.70
Milking Speed 100	CM\$ 666	Conception (SCR) N/A	
Cow Livability +2.7	HCR 0.9	CCR 1.7	
CE 2.2%	NM\$ \$645	DPR +1.3	MOB +0.3

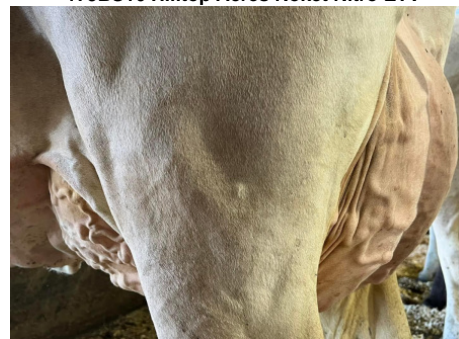
Sire: Rastaroket
Dam: Hilltop Acres S Nutella 'E 91 E 92 MS'
 1-8 305d 3x 27,250 4.5 1,223 3.5 944
 2-8 365d 3x 39,061 4.9 1,902 4.0 1,575
MGS: La Rainbow Sweet Silver-ET
MGD: Hilltop Acres Pat Nadine 'V 87 87 MS'
 3-3 305d 3x 29,550 4.8 1,406 3.7 1,088
 4-2 365d 3x 35,070 4.8 1,692 3.6 1,259



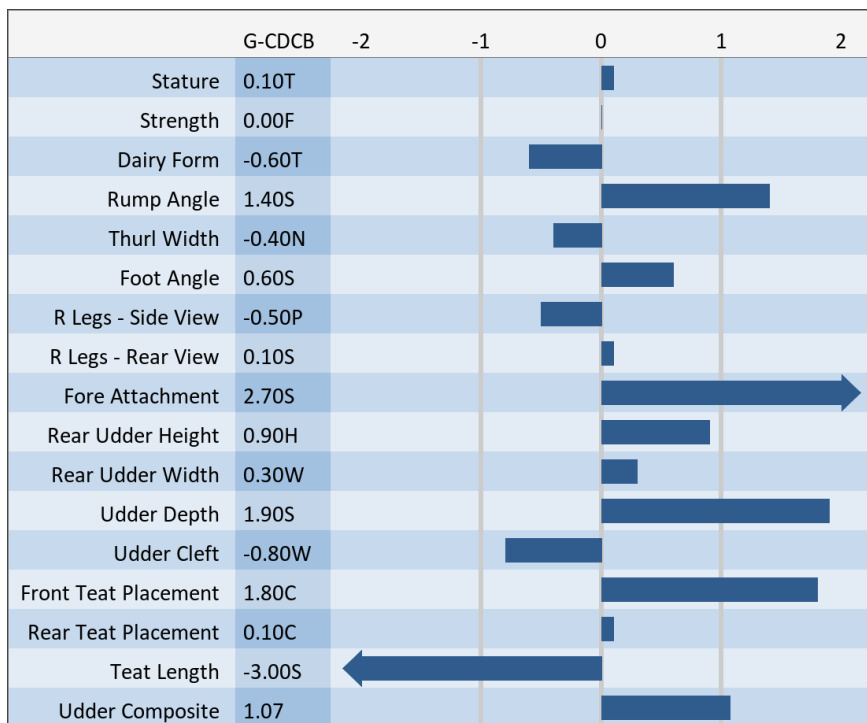
Hilltop Acres S Nutella 'E 91 E 92 MS' 3rd Lact
 DAM OF 179BS16 NITRO



179BS16 Hilltop Acres Rokat Nitro ETV



Hilltop Acres S Nutella 'E 91 E 92 MS'



NEW GENERATION GENETICS

www.brownswiss.com

(920) 568-0554

E-mail: info@brownswiss.com