

179BS16 Hilltop Acres Rokat

NITRO ETV

BS840003264521262 aAa: 234 Beta Cas: A2A2 Kappa Casein: BB
 Born: 4/14/23

Genomic Gems, Preferred Sex
RASTAROKET X SILVER X PATTON

04/2026 G-CDCB PERFORMANCE

MILK +133	FAT +26 / +0.10%	PROTEIN +31 / +0.13%	PPR 107
PROD. 67%R N/A DTRS/N/A HRDS TYPE 68%R			
PL +3.2	UDC +0.71	SCS 2.83	TYPE +0.50
Milking Speed 108	CM\$ 396	Conception (SCR) 1.1	
Cow Livability +1.0	HCR 0.2	CCR 1.5	
CE 2.9%	NM\$ \$354	DPR +1.7	MOB +0.2

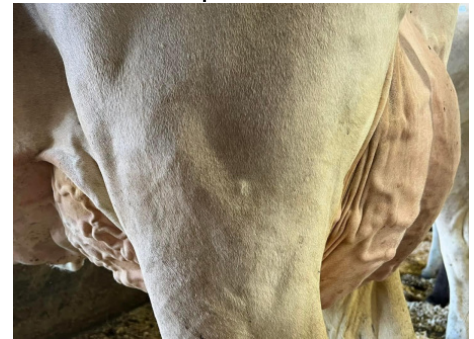
Sire: Rastaroket
Dam: Hilltop Acres S Nutella '2E 92 E 92 MS'
 2-8 365d 3x 39,061 4.9 1,902 4.0 1,575
 3-11 365d 3x 41,530 5.1 2,103 3.9 1,602
MGS: La Rainbow Sweet Silver-ET
MGD: Hilltop Acres Pat Nadine 'V 87 87 MS'
 3-3 305d 3x 29,550 4.8 1,406 3.7 1,088
 4-2 365d 3x 35,070 4.8 1,692 3.6 1,259



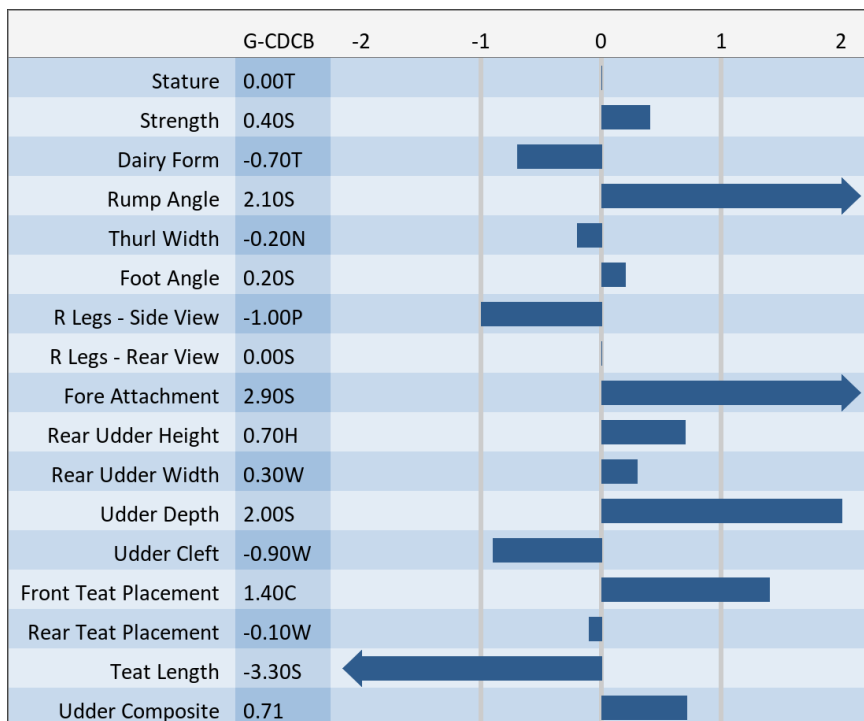
Hilltop Acres S Nutella '2E 92 E 92 MS' 3rd Lact
 DAM OF 179BS16 NITRO



179BS16 Hilltop Acres Rokat Nitro ETV



Hilltop Acres S Nutella '2E 92 E 92 MS'



NEW GENERATION GENETICS

www.brownswiss.com

(920) 568-0554

E-mail: info@brownswiss.com