

196BS57758 H.U. Huser's Huge Sg

RAY

BSCHE120158520600 aAa: 423651 Beta Cas: A2A2 Kappa Casein: BB
 Born: 10/29/2021

Preferred Sex, European Bulls (USA Only)

Huge SG X Calvin X Blooming

08/2023 G-IB-M/US PERFORMANCE			
MILK +1013	FAT +19 / -0.09%	PROTEIN +28 / -0.03%	PPR 89
PROD. 65%R N/A DTRS/N/A HRDS TYPE 64%R			
PL -0.6	UDC +1.55	SCS 3.08	TYPE +0.90
Milking Speed 105		Conception (SCR) N/A	
Cow Livability -1.8			
CE 3.3%	NM\$ \$72	DPR -0.1	MOB +0.3

Sire: HUGE SG
Dam: H.U. Huser's Calvin Romina
 4-01 305D 2X 24,138 4.1 977 3.7 891
 EX93 EX96MS
MGS: Vetschs Nesta Calvin
MGD: H.U. Huser's Blooming Ronja
 LIFETIME: 5 LACT. '115,961M 4345F 4057P
 EX93 EX96MS



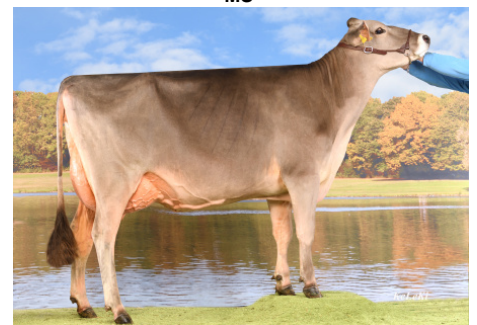
DAM: H.U. Huser's Calvin ROMINA 'E 93 E 96 MS'



H.U. Huser's Huge Sg RAY



DAM: H.U. Huser's Calvin ROMINA 'E 93 E 96 MS'



MGD: H.U. Huser's Blooming RONJA 'E 93 E 96 MS'

	G-IB-M/US -2	-1	0	1	2
Stature	3.60T				
Strength	1.60S				
Dairy Form	-0.40T				
Rump Angle	0.80S				
Thurl Width	1.40W				
Foot Angle	0.90S				
R Legs - Side View	-0.50S				
R Legs - Rear View	0.10S				
Fore Attachment	2.70S				
Rear Udder Height	1.30H				
Rear Udder Width	1.20W				
Udder Depth	1.60S				
Udder Cleft	0.70S				
Teat Placement	0.30C				
Teat Length	0.90L				
Udder Composite	1.55				

NEW GENERATION GENETICS

www.brownswiss.com

(920) 568-0554

E-mail: info@brownswiss.com