

196BS57758 H.U. Huser's Huge Sg

RAY

BSCHE120158520600 aAa: 423651 Beta Cas: A2A2 Kappa Casein: BB
 Born: 10/29/2021

Preferred Sex, European Bulls (USA Only)

Huge SG X Calvin X Blooming

12/2023 G-IB-M/US PERFORMANCE			
MILK +1007	FAT +22 / -0.08%	PROTEIN +30 / -0.02%	PPR 93
PROD. 62%R N/A DTRS/N/A HRDS TYPE 64%R			
PL -0.2	UDC +1.55	SCS 3.09	TYPE +0.90
Milking Speed 106		Conception (SCR) N/A	
Cow Livability -1.9			
CE 3.2%	NM\$ \$109	DPR -0.4	MOB +0.3

Sire: HUGE SG
Dam: H.U. Huser's Calvin Romina
 4-01 305D 2X 24,138 4.1 977 3.7 891
 EX93 EX96MS
MGS: Vetschs Nesta Calvin
MGD: H.U. Huser's Blooming Ronja
 LIFETIME: 5 LACT. '118,457M 4456F 4145P
 EX93 EX96MS



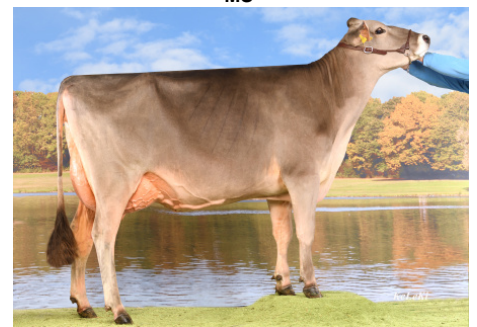
DAM: H.U. Huser's Calvin ROMINA 'E 93 E 96 MS'



H.U. Huser's Huge Sg RAY



DAM: H.U. Huser's Calvin ROMINA 'E 93 E 96 MS'



MGD: H.U. Huser's Blooming RONJA 'E 93 E 96 MS'

	G-IB-M/US -2	-1	0	1	2
Stature	3.60T				
Strength	1.60S				
Dairy Form	-0.20T				
Rump Angle	0.70S				
Thurl Width	1.30W				
Foot Angle	0.90S				
R Legs - Side View	-0.50S				
R Legs - Rear View	0.10S				
Fore Attachment	2.70S				
Rear Udder Height	1.30H				
Rear Udder Width	1.10W				
Udder Depth	1.60S				
Udder Cleft	0.80S				
Teat Placement	0.40C				
Teat Length	0.80L				
Udder Composite	1.55				

NEW GENERATION GENETICS

www.brownswiss.com

(920) 568-0554

E-mail: info@brownswiss.com

196BS57758 H.U. Huser's Huge Sg

RAY

BSCHE120158520600

aAa: 423651

Beta Cas: A2A2

Kappa Casein: BB

Born: 10/29/2021

MATING RECOMMENDATIONS

Udder Comp:

1. Diego
2. Time Out
3. Halano P

PPR:

1. Crazy Horse
2. Prince
3. Elan

Combined Components:

1. Crazy Horse
2. Titos
3. Prince

DPR:

1. Halano P
2. Top Gun
3. Darwin

NEW GENERATION GENETICS

www.brownswiss.com

(920) 568-0554

E-mail: info@brownswiss.com