

196BS57758 H.U. Huser's Huge Sg

RAY

BSCHE120158520600 aAa: 423651 Beta Cas: A2A2 Kappa Casein: BB
 Born: 10/29/2021

European Bulls (USA Only)
 Huge SG X Calvin X Blooming

04/2024 G-IB-M/US PERFORMANCE			
MILK +944	FAT +18 / -0.09%	PROTEIN +28 / -0.02%	PPR 70
PROD. 63%R N/A DTRS/N/A HRDS TYPE 65%R			
PL -0.2	UDC +1.42	SCS 3.12	TYPE +0.80
Milking Speed 105		Conception (SCR) N/A	
Cow Livability -1.4			
CE 3.2%	NM\$ \$68	DPR -1.6	MOB +0.3

Sire: HUGE SG
Dam: H.U. Huser's Calvin Romina 'E 93 E 96 MS'
 4-01 305D 2X 24,138 4.1 977 3.7 891
 5-4 R.I.P 106D 2x 10,207 4.0 412 3.4 346
MGS: Vetschs Nesta Calvin
MGD: H.U. Huser's Blooming Ronja 'E 93 E 96 MS'
 LIFETIME- 5 LACTATIONS 118,457M 3.8 4,456F 3.5 4,145P



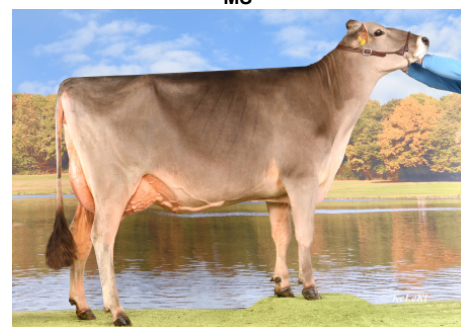
DAM: H.U. Huser's Calvin ROMINA 'E 93 E 96 MS'



H.U. Huser's Huge Sg RAY



DAM: H.U. Huser's Calvin ROMINA 'E 93 E 96 MS'



MGD: H.U. Huser's Blooming RONJA 'E 93 E 96 MS'

	G-IB-M/US -2	-1	0	1	2
Stature	3.50T				
Strength	1.60S				
Dairy Form	-0.20T				
Rump Angle	0.90S				
Thurl Width	1.30W				
Foot Angle	0.80S				
R Legs - Side View	-0.50S				
R Legs - Rear View	0.10S				
Fore Attachment	2.40S				
Rear Udder Height	1.20H				
Rear Udder Width	1.10W				
Udder Depth	1.50S				
Udder Cleft	0.70S				
Teat Placement	0.30C				
Teat Length	0.90L				
Udder Composite	1.42				

NEW GENERATION GENETICS

www.brownswiss.com

(920) 568-0554

E-mail: info@brownswiss.com

196BS57758 H.U. Huser's Huge Sg

RAY

BSCHE120158520600

aAa: 423651

Beta Cas: A2A2

Kappa Casein: BB

Born: 10/29/2021

MATING RECOMMENDATIONS

Udder Comp:

1. Diego
2. Time Out
3. Halano P

PPR:

1. Crazy Horse
2. Prince
3. Elan

Combined Components:

1. Crazy Horse
2. Titos
3. Prince

DPR:

1. Halano P
2. Top Gun
3. Darwin

NEW GENERATION GENETICS

www.brownswiss.com

(920) 568-0554

E-mail: info@brownswiss.com