

196BS59390 GoldHill Pete

CISCO *TM

120176812527 aAa: 651423 Beta Cas: A2A2 Kappa Casein: BB
 Born: 12/5/23 BH14C

Preferred Sex, European Bulls (USA Only)
PETE X OPTIMAL X BENDER

04/2026 G-IB-M/US PERFORMANCE			
MILK +366	FAT +10 / -0.03%	PROTEIN +17 / +0.02%	PPR 58
PROD. 63%R N/A DTRS/N/A HRDS TYPE 64%R			
PL +0.2	UDC +1.03	SCS 3.08	TYPE +0.10
Milking Speed 105	CM\$ 138	Conception (SCR) N/A	
Cow Livability +0.8	HCR 0.8	CCR 0	
CE 3.2%	NM\$ \$132	DPR +1.1	MOB +0.2

Sire: Herrenhof BS Calvin Pete-ET
Dam: GoldHill Optimal Clea-ET '+83 V 86 MS'
 3-08 305d 2x 20,655 4.4 908 3.8 789
 R.I.P 4-08 164d 2x 15,641 4.3 657 3.7 567
MGS: OPTIMAL ET
MGD: GoldHill Bender Caluna ET 'E 94 E 97 MS'
 5-09 305d 2x 27,604 4.4 1,226 3.6 999
 LIFETIME: 1,859D 2X 120,730M 5,075F 4,636P

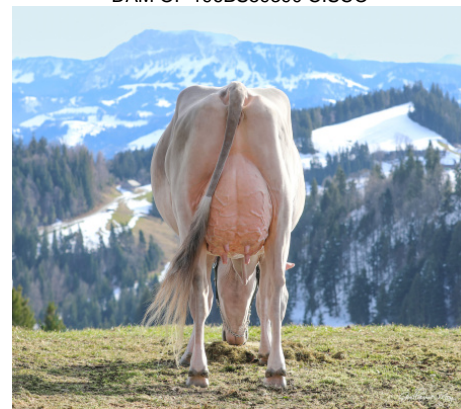
	G-IB-M/US -2	-1	0	1	2
Stature	-1.40S				
Strength	0.20S				
Dairy Form	-0.60T				
Rump Angle	0.40S				
Thurl Width	-0.50N				
Foot Angle	-0.80L				
R Legs - Side View	-0.20P				
R Legs - Rear View	0.00S				
Fore Attachment	1.40S				
Rear Udder Height	1.10H				
Rear Udder Width	1.50W				
Udder Depth	1.30S				
Udder Cleft	0.20S				
Front Teat Placement	0.50C				
Rear Teat Placement	0.10C				
Teat Length	-2.40S				
Udder Composite	1.03				



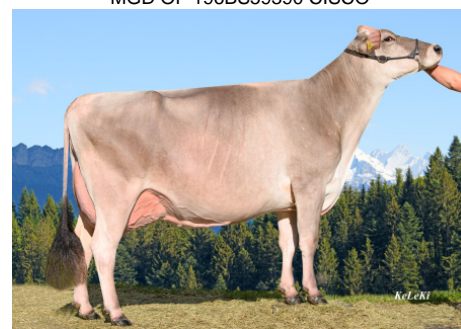
GoldHill Bender Caluna SG ET 'E 94 E 97 MS'
 MGD OF 196BS59390 CISCO



GoldHill Optimal Clea ET '+83 V 86 MS'
 DAM OF 196BS59390 CISCO



GoldHill Bender Caluna SG ET 'E 94 E 97 MS'
 MGD OF 196BS59390 CISCO



GoldHill Simbaboy Caluna 'E 93 E 96 MS'
 3RD DAM OF 196BS59390 CISCO

NEW GENERATION GENETICS

www.brownswiss.com

(920) 568-0554

E-mail: info@brownswiss.com