

54BS509 Shiloh Brookings

CADENCE ET *TM

71130650 aAa: 156 Beta Cas: A1A2 Kappa Casein: BB
Born: 01/15/2012

Proven Sires

BROOKINGS X WONDERMENT X PRONTO

#1 SCR, #3 TYPE (TIED), #4 FAT (TIED), #4 PROTEIN (TIED), #5 SCS (PROVEN)

08/2021 G-CDCB PERFORMANCE			
MILK +669	FAT +27 / 0.00%	PROTEIN +28 / +0.02%	PPR 76
PROD. 99%R 4661 DTRS/2122 HRDS TYPE 99%R			
PL +1.7	UDC +0.45	SCS 2.83	TYPE +0.60
Milking Speed 105		Conception (SCR) 3.1	
Cow Livability -1.4			
CE 1.9%	NM\$ \$289	DPR -2.0	MOB +0.2

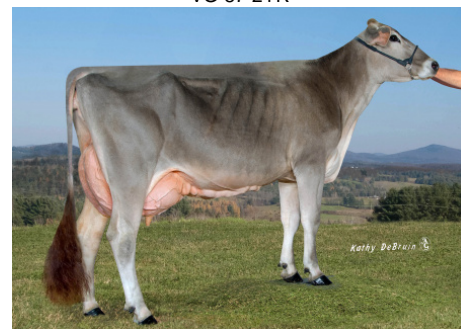
Sire: R N R Payoff Brookings ET *TM
Dam: Sun-Made SD Wonder Buff ET 'VG 88"
4-03 279d 3x 35,470 3.9 1,369 3.4 1,199
MGS: Top Acres C Wonderment-ET TM
MGD: Front Line Pronto Bounty ET 'E90'



Cadence Mitzi



Rigoni Cadence Extra
VG-87-2YR



Twinkle Hill Cadence Olivea



La Rainbow Sweet Silk
2nd Lactation
Dam of 54BS577 SILVER and 54BS601 SALSA

	G-CDCB	-2	-1	0	1	2
Stature	-0.10S					
Strength	-0.30F					
Dairy Form	0.10O					
Rump Angle	0.00H					
Thurl Width	0.20W					
Foot Angle	-0.20L					
R Legs - Side View	0.50C					
R Legs - Rear View	0.40S					
Fore Attachment	0.60S					
Rear Udder Height	0.40H					
Rear Udder Width	0.90W					
Udder Depth	-0.30D					
Udder Cleft	0.00S					
Teat Placement	0.20C					
Teat Length	-0.10S					
Udder Composite	0.45					

NEW GENERATION GENETICS

www.brownswiss.com

(920) 568-0554

E-mail: info@brownswiss.com

54BS509 Shiloh Brookings

CADENCE ET *TM

71130650 aAa: 156 Beta Cas: A1A2 Kappa Casein: BB
Born: 01/15/2012

MATING RECOMMENDATIONS

Type:

1. Time Out
2. Daredevil
3. Juke

PPR:

1. Pactole
2. Jonmar
3. Design

Combined Components:

1. Get Lucky
2. Lucky Carl
3. Pactole

DPR:

1. Kade * NP
2. Pactole
3. O Malley

NEW GENERATION GENETICS

www.brownswiss.com

(920) 568-0554

E-mail: info@brownswiss.com