

# 54BS539 Jo-Dee Nemo

## RICHARD ET \*TM

68155420 aAa: 453 Beta Cas: A1A2 Kappa Casein: BB BH14  
 Born: 6/10/2013

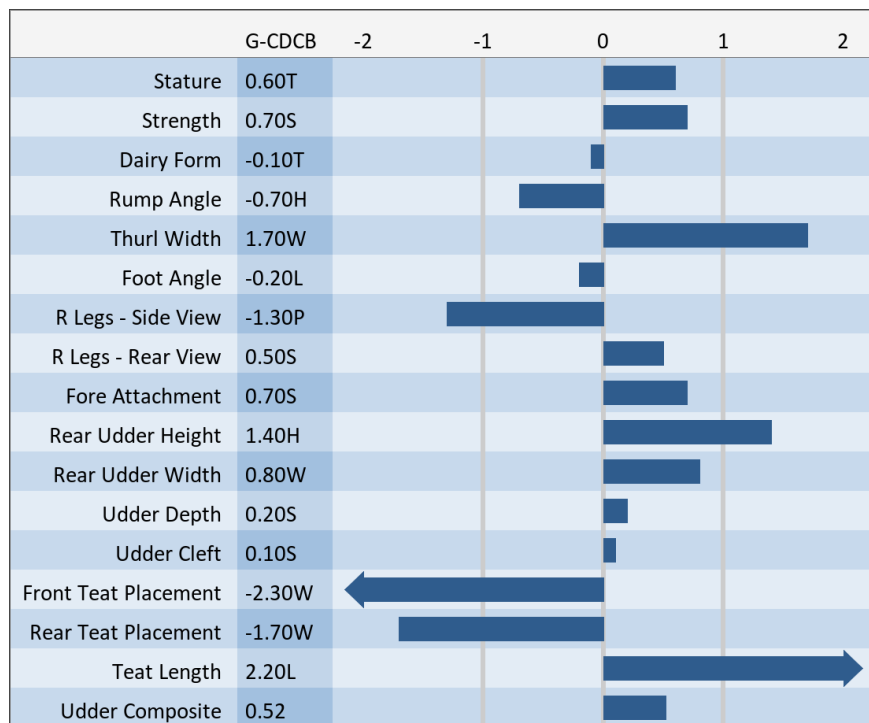
### Proven Sires

**NEMO x ENSIGN x BANKER**

#### 04/2026 G-CDCB PERFORMANCE

MILK +710	FAT -9 / -0.18%	PROTEIN +2 / -0.11%	PPR -15
PROD. 99%R 1054 DTRS/369 HRDS TYPE 99%R			
PL 0.0	UDC +0.52	SCS 3.18	TYPE +0.30
Milking Speed 108	CM\$ -208	Conception (SCR) N/A	
Cow Livability -2.9	HCR -1.1	CCR -3.5	
CE 4%	NM\$ -\$177	DPR -0.4	MOB +0.3

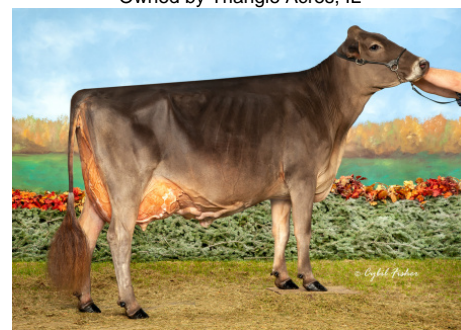
**Sire:** Jo-Dee Prelude Nemo ET \*TM  
**Dam:** Jo-Dee Ensign Rosebud '2E93 E92 MS'  
 Lifetime: 2,700d 194,640m 6,920f 6,359p  
 All American 2013 & 2x HM All American, 5x Nominated All American  
**MGS:** R Hart Simon Ensign ET  
**MGD:** Jo-Dee Banker Rose '2E93 E92 MS'  
 Lifetime: 2194d 182,680m 7,613f 6,407p  
 Nominated All American 2009



**Pit-Crew Rich Peaches-Twin**  
 ALL AMERICAN 4 YAER OLD 2020  
 Owned by Pit-Crew Genetics, MN



**Triangle Acres Pandora-ET**  
 NOMINATED ALL AMERICAN AGED COW 2022  
 Owned by Triangle Acres, IL



**Pit-Crew Rich Prankster ET**  
 ALL AMERICAN 4 YEAR OLD 2021  
 Owned by Pit-Crew Genetics, MN



**Giesy Manor Richard Fauna - 3rd Lactation**  
 1st Place 4-Year-Old Southwest Fall National 2020  
 Honorable Mention All-American Jr. 3-Year-Old 2019  
 Owned by Edge-View Genetics, New York & Kentucky

### NEW GENERATION GENETICS

www.brownswiss.com

(920) 568-0554

E-mail: info@brownswiss.com