

# 54BS561 Hilltop Acres BV

## JESSE ET \*TM

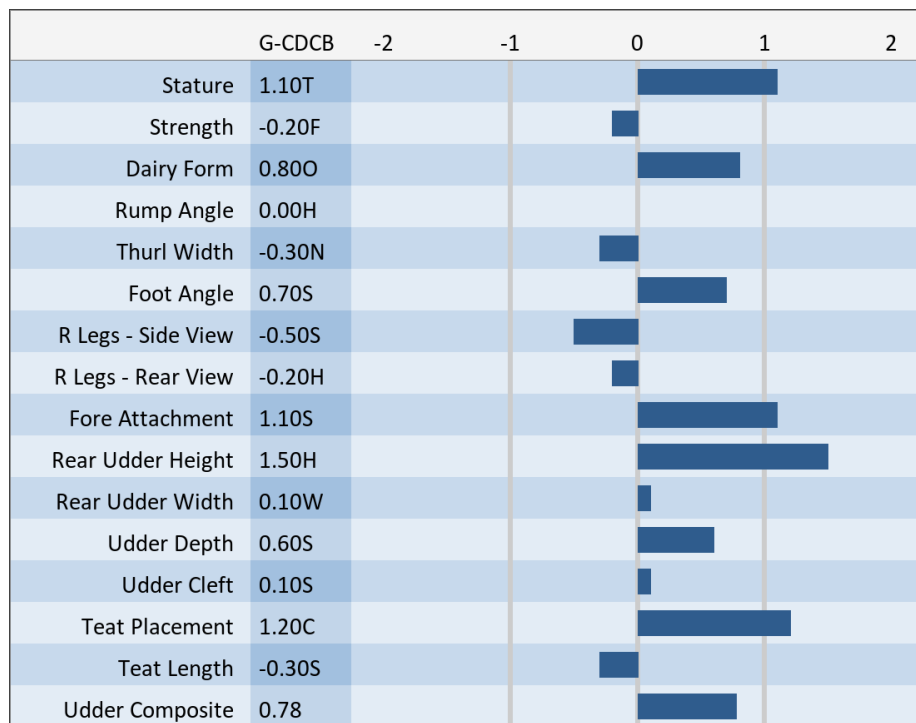
840003132647435 aAa: 315 Beta Cas: A1/A2 Kappa Casein: BB  
 Born: 08/14/15

**Proven Sires**  
**BIVER X TD X DYNASTY**

04/2021 G-CDCB PERFORMANCE			
MILK +561	FAT +14 / -0.04%	PROTEIN +28 / +0.04%	PPR 89
PROD. 83%R 29 DTRS/12 HRDS TYPE 77%R			
PL +1.6	UDC +0.78	SCS 3.12	TYPE +0.50
Milking Speed 102		Conception (SCR) N/A	
Cow Livability +1.2			
CE 3%	NM\$ \$209	DPR +0.2	MOB +0.1

MATING GUIDE	
+Fore Udder	
+Udder Depth & Cleft	
+Foot Angle	
+Rear Udder Height & Width	
-Rear Legs - Straight & Rump Angle - Level	

**Sire:** Scherma Blooming Biver \*TM  
**Dam:** Hilltop Acres TD Jess ET "2E 91 E 91 MS"  
 Lifetime: 2,247D 208,730M 9,363F 7,750P  
**MGS:** Webster Ridge TD ET \*TM  
**MGD:** Hilltop Acres DTY Jazzy ET "3E 91 E 91 MS"  
 Lifetime: 2,704D 229,950M 11,756F, 9,019P



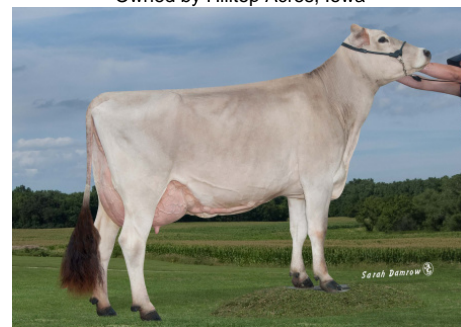
**Hilltop Acres Jesse Darma**  
 Owned by Hilltop Acres, Iowa



**Hills Valley Jesse Brysha**  
 Owned by Hills Valley, New York



**IE Hilltop Acres Jesse Wendy**  
 Owned by Hilltop Acres, Iowa



**Dam: Hilltop Acres TD Jess '2E 91 E 91 MS'**  
 2-07 324d 3x 26,860 4.5 1,201 3.4 909  
 3-07 365d 3x 36,430 4.6 1,686 3.7 1,354  
 4-11 326d 3x 34,080 4.3 1,471 3.8 1,280  
 5-11 365d 3x 31,140 4.4 1,371 3.7 1,167  
 7-05 365d 3x 34,570 4.5 1,549 3.8 1,315  
 Lifetime: 2,247d 208,730m 9,363f 7,750p  
 Dam of 54BS561 JESSE

**NEW GENERATION GENETICS**

www.brownswiss.com  
 (920) 568-0554  
 E-mail: info@brownswiss.com

**54BS561** Hilltop Acres BV

**JESSE** ET \*TM

---

840003132647435    aAa: 315    Beta Cas: A1/A2    Kappa Casein: BB  
Born: 08/14/15

**MATING RECOMMENDATIONS**

TOP MATING CHOICE FOR PPR

1. Get Lucky
2. Jonmar
3. Lucky Carl

TOP MATING CHOICE FOR TYPE

1. Salsa
2. Doboy
3. Daredevil

TOP MATING CHOICE FOR COMBINED COMPONENTS

1. Lucky Carl
2. Get Lucky
3. Sandstorm

TOP MATING CHOICE FOR DPR

1. Kade \* NP
2. Trek
3. Jonmar

**NEW GENERATION GENETICS**

www.brownswiss.com

(920) 568-0554

E-mail: info@brownswiss.com