

# 54BS573 Kulp-Terra LUCKY CARL ET \*TM

840003139216990 aAa: 324 Beta Cas: A2A2 Kappa Casein: BB  
Born: 8/26/2016

## Genomic Gems

#4 FAT, #4 PROTEIN, #4 MILK, #9 PPR  
GET LUCKY x CARTEL x BROOKINGS

08/2020 G-CDCB PERFORMANCE			
MILK +1899	FAT +56 / -0.09%	PROTEIN +52 / -0.05%	PPR 173
PROD. 67%R N/A DTRS/N/A HRDS TYPE 66%R			
PL -0.7	UDC +0.10	SCS 2.91	TYPE +0.50
Milking Speed 100		Conception (SCR) -0.5	
Cow Livability -2.3			
CE 3.2%	NM\$ \$317	DPR -0.6	MOB +0.3

## MATING GUIDE

+ Rump Width  
+ Teat Placement  
+ Size & Strength  
+ Rear Udder Height & Width

- Udder Cleft

Rear Legs- Some Set & Rump Angle- High

**Sire:** BMG Lust Get Lucky ET \*TM  
**Dam:** Kulp-Terra Cartel Cathy ET "EX-90 EX-90 MS"  
2-02 305d 2x 26930 4.5 1208 3.6 978  
**MGS:** Victory Acres Genom Cartel \*TM  
**MGD:** Voelkers Brookings Cara "VG-89 EX-90 MS"  
2-06 321d 2x 24,779 4.4 1,090 3.5 871

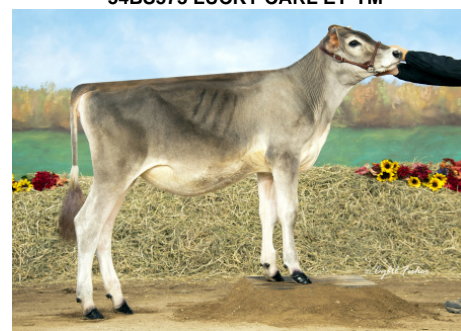
	G-CDCB	-2	-1	0	1	2
Stature	2.90T					→
Strength	0.40S					
Dairy Form	1.300					
Rump Angle	-0.40H					
Thurl Width	0.70W					
Foot Angle	0.50S					
R Legs - Side View	1.00C					
R Legs - Rear View	0.10S					
Fore Attachment	-1.00L					
Rear Udder Height	0.70H					
Rear Udder Width	1.40W					
Udder Depth	-0.80D					
Udder Cleft	-0.60W					
Teat Placement	-0.50W					
Teat Length	1.40L					
Udder Composite	0.10					



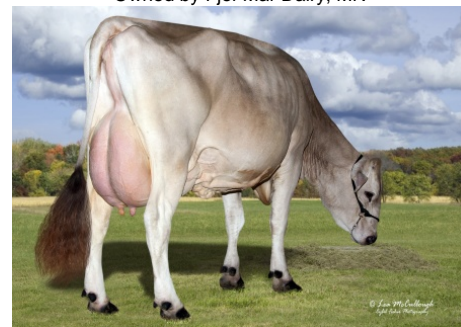
Hilltop Acres Carl Disney



54BS573 LUCKY CARL ET\*TM



Fjel-Mar Lucky Carl Fallyn  
1st Spring Calf MN State Show, 2019  
Owned by Fjel-Mar Dairy, MN



Dam: Kulp-Terra Cartel Cathy ET 'EX 90 EX 90MS' 2nd Lactation

## NEW GENERATION GENETICS

www.brownswiss.com

(920) 568-0554

E-mail: info@brownswiss.com

**54BS573** Kulp-Terra

**LUCKY CARL** ET \*TM

---

840003139216990    aAa: 324    Beta Cas: A2A2    Kappa Casein: BB  
Born: 8/26/2016

**MATING RECOMMENDATIONS**

TOP MATING CHOICE FOR PPR

1. Sandstorm
2. Phantom
3. Hampton

TOP MATING CHOICE FOR TYPE

1. Diego
2. Daredevil
3. Juke

**NEW GENERATION GENETICS**

[www.brownswiss.com](http://www.brownswiss.com)

(920) 568-0554

E-mail: [info@brownswiss.com](mailto:info@brownswiss.com)