

54BS580 V B Biver

PHANTOM ET

68182661 aAa: 231 Beta Cas: A2A2 Kappa Casein: BB
 Born: 3/3/2017

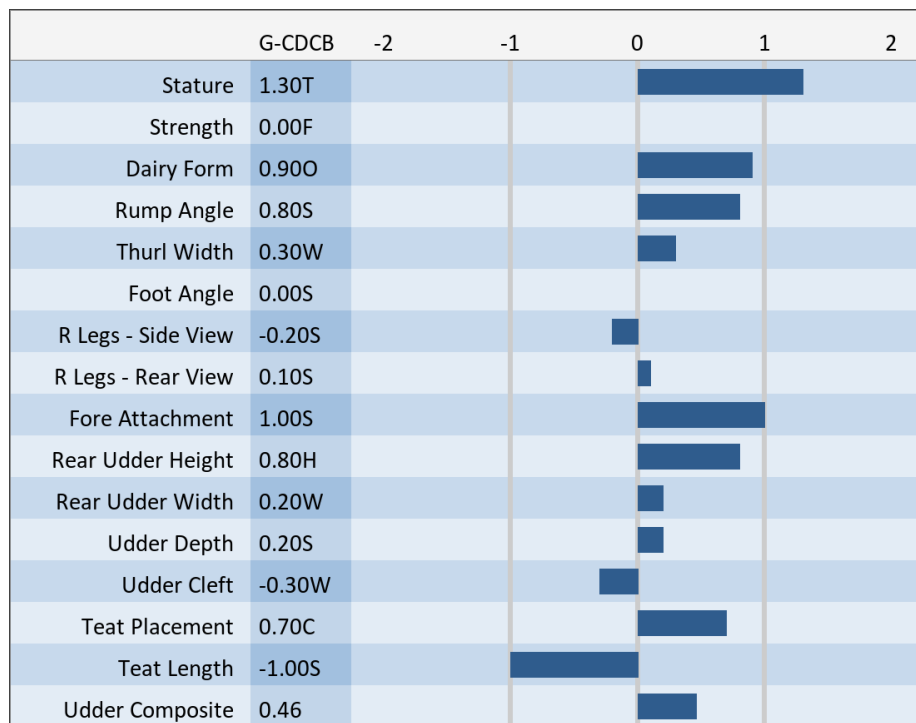
Genomic Gems

BIVER x SUPREME x DYNASTY

04/2021 G-CDCB PERFORMANCE			
MILK +433	FAT +37 / +0.08%	PROTEIN +28 / +0.06%	PPR 116
PROD. 67%R N/A DTRS/N/A HRDS TYPE 69%R			
PL +2.0	UDC +0.46	SCS 2.98	TYPE +0.50
Milking Speed 106		Conception (SCR) -3.7	
Cow Livability +0.9			
CE 2.6%	NM\$ \$319	DPR +0.4	MOB +0.2

MATING GUIDE	
+ Udder Cleft & Depth	
+ Fore Udder	
+ Size & Strength	
+ Rear Udder Height & Width	
Rear Legs- Straight & Rump- Slope	

Sire: Scherma Blooming Biver ET
Dam: Sun-Made HP Suprme Pixel ET '2E 94 E 94 MS'
 Lifetime: 1379d 131260m 6511f 4639p
MGS: Old Mill Wde Supreme ET *TM

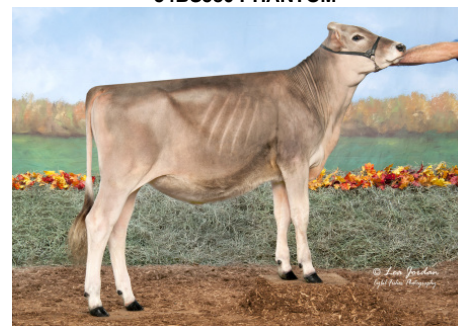


Dam: Sun-Made HP Suprme Pixel ET '2E 94 E 94 MS'

3-05 365d 2x 39,150 4.7 1,830 3.4 1,324
 5-07 365d 2x 32,937 5.5 1,808 3.4 1,122
 Lifetime: 1,805d 165,430m 8,499f 5,855p
 Dam of 54BS580 PHANTOM



54BS580 PHANTOM



R N R Phantom Allie

Nominated All American Spring Calf 2019
 1st Place Spring Calf Southeastern National 2019
 Owned by Kaylee Cherry, Ohio

NEW GENERATION GENETICS

www.brownswiss.com

(920) 568-0554

E-mail: info@brownswiss.com

54BS580 V B Biver

PHANTOM ET

68182661 aAa: 231 Beta Cas: A2A2 Kappa Casein: BB
Born: 3/3/2017

MATING RECOMMENDATIONS

TOP MATING CHOICES FOR TYPE

1. Salsa
2. Doboy
3. Daredevil

TOP MATING CHOICES FOR PPR

1. Get Lucky
2. Silver Coin
3. Lucky Carl

TOP MATING CHOICES FOR COMBINED COMPONENTS

1. Lucky Carl
2. Get Lucky
3. Salsa

TOP MATING CHOICES FOR DPR

1. Kade * NP
2. O Malley
3. Trek

NEW GENERATION GENETICS

www.brownswiss.com

(920) 568-0554

E-mail: info@brownswiss.com