

54BS581 Jo-Dee Royal Hill

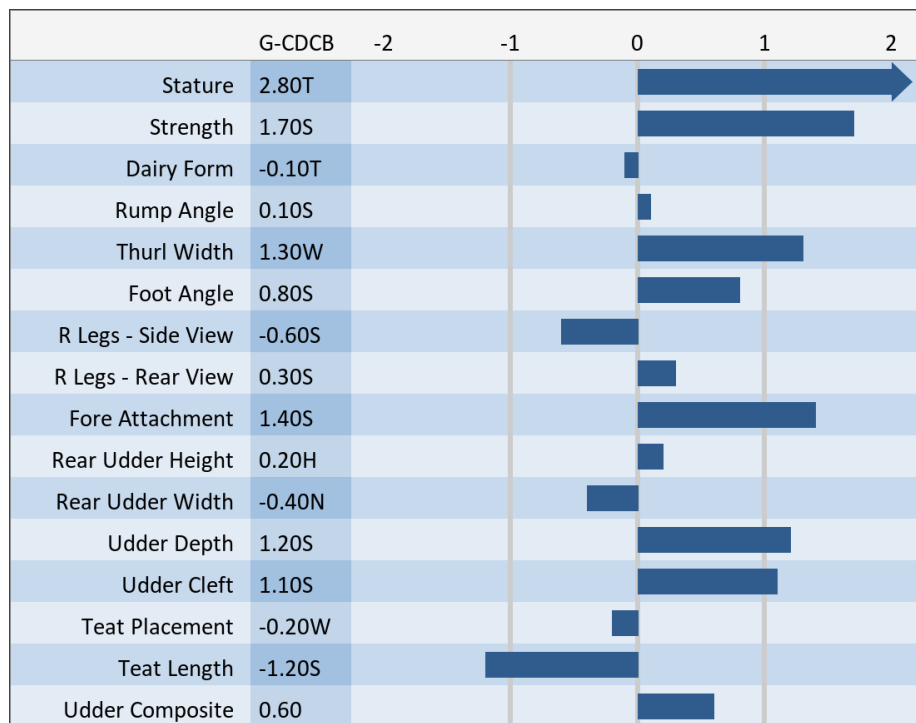
RASTA ET *TM

840003135087427 aAa: 342 Beta Cas: A2A2 Kappa Casein: BB
 Born: 2/16/2016

Proven Sires, Preferred Sex, Champions Collection
GLENN x NEMO x ENSIGN

| 08/2022 G-CDCB PERFORMANCE | | | |
|--------------------------------------|---------------------|------------------------|------------|
| MILK -216 | FAT -20 / -0.05% | PROTEIN -6 / +0.01% | PPR -38 |
| PROD. 89%R 72 DTRS/42 HRDS TYPE 82%R | | | |
| PL +0.7 | UDC +0.60 | SCS 3.12 | TYPE +0.70 |
| Milking Speed 102 | | Conception (SCR) -0.2 | |
| Cow Livability +1.1 | | | |
| CE 2.5% | NM\$ -\$226 | DPR -1.8 | MOB +0.1 |

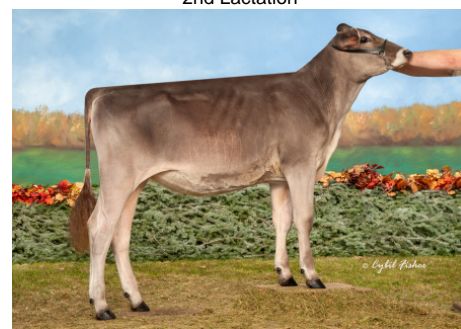
Sire: Schaumaun BS Gordon Glenn ET *TM
Dam: Jo-Dee Nemo Risky '2E94 E94 MS'
 Lifetime: 1,968d 143,950m 5,288f 4,644p
 Reserve All American 2014: HM All American '12, '13 & '16: Member of All American Best 3 Females '13 & '14
MGS: Jo-Dee Prelude Nemo ET *TM
MGD: Jo-Dee Ensign Rosebud '2E93 E92 MS'
 Lifetime: 2,700d 194,640m 6,920f 6,359p
 All American 2013 & 2x HM All American, 5x Nominated All American



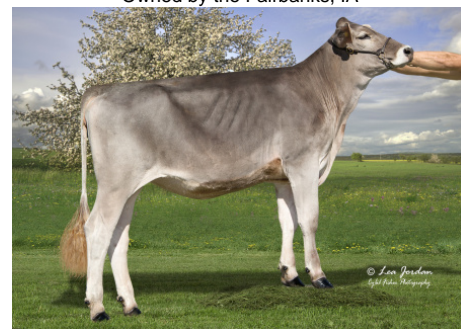
Pit-Crew Rasta Panama-ET
 Owned by Pit Crew Genetics, MN



Heilinger Rasta Lucy
 2nd Lactation



Wapsi-Ana Rasta Janet
 Owned by the Fairbanks, IA



ABS RASTA STORMY
 Owned by Alexis Blankenberg, WI

NEW GENERATION GENETICS
 www.brownswiss.com
 (920) 568-0554
 E-mail: info@brownswiss.com

54BS581 Jo-Dee Royal Hill

RASTA ET *TM

840003135087427 aAa: 342 Beta Cas: A2A2 Kappa Casein: BB
Born: 2/16/2016

MATING RECOMMENDATIONS

Type:

1. Time Out
2. Cliff
3. Doboy

PPR:

1. Pactole
2. Jonmar
3. Design

Combined Components:

1. Derringer
2. Design
3. Jordy *NP

DPR:

1. Deluxe
2. Toby
3. Silver Coin

NEW GENERATION GENETICS

www.brownswiss.com

(920) 568-0554

E-mail: info@brownswiss.com