

# 54BS600 Top Acres Cad

## WINRITE ETV \*TM

68201687 aAa: 324 Beta Cas: A2/A2 Kappa Casein: BB  
 Born: 12/7/2018

**Genomic Gems, Champions Collection**  
**CADENCE X SUPREME X ANDRE**

08/2022 G-CDCB PERFORMANCE			
MILK +503	FAT +20 / 0.00%	PROTEIN +18 / 0.00%	PPR 65
PROD. 70%R N/A DTRS/N/A HRDS TYPE 71%R			
PL +1.3	UDC +0.41	SCS 2.95	TYPE +0.60
Milking Speed 106		Conception (SCR) 0.5	
Cow Livability +0.6			
CE 3.1%	NM\$ \$224	DPR -0.8	MOB +0.4

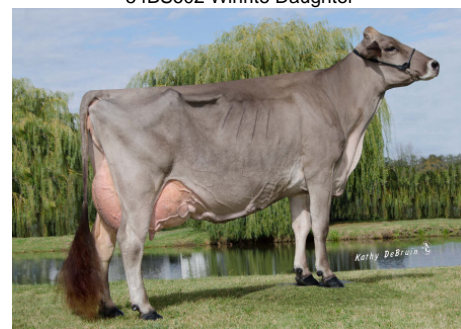
**Sire:** Shiloh Brookings Cadence ET  
**Dam:** Top Acres Supreme Wizard ET '2E95 E94MS'  
 Lifetime: 2,557d 202,535m 11,043f 7,077p  
 Grand Champion WDE 2017, All American 2017 & 2013, Int. & Reserve  
 Grand Champion WDE 2013, Member of All American Produce of Dam  
 2013, 2014, 2015 & 2016 & Reserve All American 2012, 2015 & 2016  
**MGS:** Old Mill WDE Supreme ET  
**MGD:** Top Acres Andre Whisper ET '2E-93 EX 93 MS'  
 5-07 365d 2x 32941 5.8 1921 3.6 1174  
 Nominated All-American Winter Calf 2005



Jennings Gap Win Surprise



Empire Winrite Lotus  
 54BS602 Winrite Daughter



Top Acres Supreme Wizard ET "2E 95 E 94 MS"  
 Dam of 54BS600 Winrite



Top Acres Cad Winrite ETV

	G-CDCB	-2	-1	0	1	2
Stature	0.90T					
Strength	-0.20F					
Dairy Form	1.00O					
Rump Angle	-0.60H					
Thurl Width	0.90W					
Foot Angle	0.30S					
R Legs - Side View	0.40C					
R Legs - Rear View	0.30S					
Fore Attachment	0.60S					
Rear Udder Height	0.60H					
Rear Udder Width	0.60W					
Udder Depth	0.30S					
Udder Cleft	-0.10W					
Teat Placement	-0.20W					
Teat Length	-1.20S					
Udder Composite	0.41					

### NEW GENERATION GENETICS

www.brownswiss.com

(920) 568-0554

E-mail: info@brownswiss.com

**54BS600** Top Acres Cad

**WINRITE** ETV \*TM

---

68201687    aAa: 324    Beta Cas: A2/A2    Kappa Casein: BB  
Born: 12/7/2018

**MATING RECOMMENDATIONS**

PPR:

1. Pactole
2. Jonmar
3. Design

Type:

1. Time Out
2. Cliff
3. Dobby

Combined Components:

1. Derringer
2. Pactole
3. Design

DPR:

1. Deluxe
2. Trek
3. Silver Coin

**NEW GENERATION GENETICS**

www.brownswiss.com

(920) 568-0554

E-mail: info@brownswiss.com