

54BS617 V B JONMAR TOP GUN

68217549 aAa: 423 Beta Cas: A2A2 Kappa Casein: BB
Born: 06/29/2021

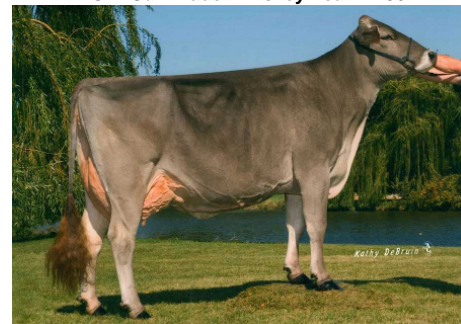
Genomic Gems, Preferred Sex
JONMAR X FACT X WHISKEY

08/2022 G-CDCB PERFORMANCE			
MILK +806	FAT +17 / -0.07%	PROTEIN +25 / -0.01%	PPR 159
PROD. 62%R N/A DTRS/N/A HRDS TYPE 64%R			
PL +5.5	UDC +1.01	SCS 2.78	TYPE +0.30
Milking Speed 103		Conception (SCR) N/A	
Cow Livability +3.2			
CE 2.6%	NM\$ \$431	DPR +3.4	MOB +0.1

Sire: Portmann BS Bays Jonmar
Dam: V B HP Fact Tea Pot-ET 'VG 87'
3-03 302d 2x 21,710 4.0 870 3.3 714
Kiba Anibal Fact
MGD: Sun-Made Whiskey Tea 'EX 90 EX 92 MS'
2-02 365d 2x 25,870 4.3 1,121 3.4 881



MGD: Sun-Made Whiskey Tea 'EX 90'



4th Dam: Milk & Honey Tonis Tessa
E 91 E 92 MS



5th Dam: Timberline Jetway Toni 'EX 94'

	G-CDCB	-2	-1	0	1	2
Stature	-0.20S					
Strength	0.90S					
Dairy Form	-1.00T					
Rump Angle	0.60S					
Thurl Width	0.00W					
Foot Angle	1.00S					
R Legs - Side View	-0.10S					
R Legs - Rear View	0.10S					
Fore Attachment	2.70S					
Rear Udder Height	0.80H					
Rear Udder Width	-0.20N					
Udder Depth	2.00S					
Udder Cleft	0.50S					
Teat Placement	-0.20W					
Teat Length	0.00S					
Udder Composite	1.01					

NEW GENERATION GENETICS

www.brownswiss.com

(920) 568-0554

E-mail: info@brownswiss.com

54BS617 V B JONMAR

TOP GUN

68217549 aAa: 423 Beta Cas: A2A2 Kappa Casein: BB
Born: 06/29/2021

MATING RECOMMENDATIONS

PPR:

1. Pactole
2. Design
3. Derringer

Type:

1. Time Out
2. Daredevil
3. Doboy

Combined Components:

1. Derringer
2. Catapult
3. Design

DPR:

1. Deluxe
2. Kade *NP
3. Trek

NEW GENERATION GENETICS

www.brownswiss.com

(920) 568-0554

E-mail: info@brownswiss.com