

54BS619 HILLTOP ACRES NASHVILLE ET

840003232308577 aAa: 612 Beta Cas: A2A2 Kappa Casein: BB
Born: 10/26/2021

Proven Sires, Preferred Sex
JONMAR X SILVER X PATTON

04/2026 G-CDCB PERFORMANCE			
MILK +562	FAT +30 / +0.03%	PROTEIN +36 / +0.08%	PPR 97
PROD. 84%R 27 DTRS/17 HRDS TYPE 74%R			
PL +1.4	UDC +0.46	SCS 3.02	TYPE +0.40
Milking Speed 105	CM\$ 304	Conception (SCR) 0.9	
Cow Livability +0.8	HCR -0.2	CCR -0.5	
CE 3.1%	NM\$ \$277	DPR 0.0	MOB -0.1

Sire: Portmann BS Bays Jonmar
Dam: Hilltop Acres S Nutella '2E 92 E 92 MS'
2-8 365d 3x 39,061 4.9 1,902 4.0 1,575
3-11 365d 3x 41,530 5.1 2,103 3.9 1,602
MGS: La Rainbow Sweet Silver ET
MGD: Hilltop Acres Pat Nadine 'V 87 87 MS'
3-3 305d 3x 29,550 4.8 1,406 3.7 1,088
4-2 365d 3x 35,070 4.8 1,692 3.6 1,259

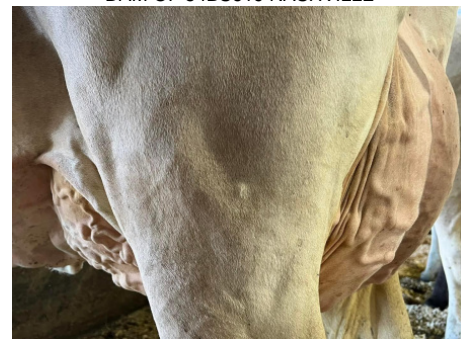
	G-CDCB	-2	-1	0	1	2
Stature	-1.10S					
Strength	0.80S					
Dairy Form	-1.10T					
Rump Angle	1.80S					
Thurl Width	0.20W					
Foot Angle	-0.10L					
R Legs - Side View	-1.20P					
R Legs - Rear View	-0.20H					
Fore Attachment	1.30S					
Rear Udder Height	0.20H					
Rear Udder Width	0.10W					
Udder Depth	0.50S					
Udder Cleft	0.00S					
Front Teat Placement	1.70C					
Rear Teat Placement	1.00C					
Teat Length	-1.00S					
Udder Composite	0.46					



54BS619 Hilltop Acres Nashville-ET



Hilltop Acres S Nutella '2E 92 E 92 MS'
3RD LACT.
DAM OF 54BS619 NASHVILLE



Hilltop Acres S Nutella '2E 92 E 92 MS'



Hilltop Acres Nash Iggy

NEW GENERATION GENETICS

www.brownswiss.com

(920) 568-0554

E-mail: info@brownswiss.com