

709BS11 Cher-Mi Halano

VIRGIL *NP ET *TM

840003272634106 aAa: 264 Beta Cas: A2A2 Kappa Casein: BB
Born: 8/14/24

Genomic Gems, Preferred Sex
HALANO P X LOVER X CLIFF

04/2026 G-CDCB PERFORMANCE

MILK +555	FAT +21 / -0.01%	PROTEIN +38 / +0.09%	PPR 114
PROD. 61%R N/A DTRS/N/A HRDS TYPE 63%R			
PL +2.3	UDC +1.01	SCS 2.78	TYPE +0.50
Milking Speed 103	CM\$ 313	Conception (SCR) N/A	
Cow Livability +0.5	HCR 0.9	CCR 0.7	
CE 3.7%	NM\$ \$279	DPR +2.0	MOB +0.2

Sire: HALANO P
Dam: Cher-Mi Lover Varda 'E 91 E 91 MS'
2-01 365d 2x 25,400 4.2 1,067 3.9 986
R.I.P. 3-03 219d 2x 18,779 3.9 736 3.5 659
MGS: Ca Mascari Bloom Lover
MGD: Cher-Mi Cliff Valerie 'E 92 E 92 MS'
4-00 365d 2x 27,340 4.4 1,198 3.8 1,036
Grand Champion Vermont State Show 2022

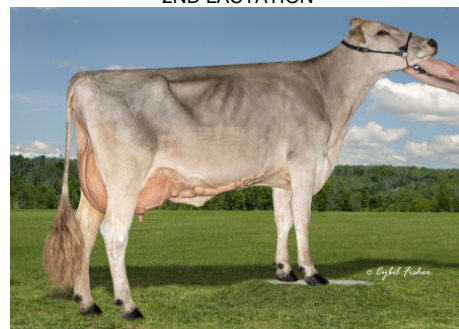
	G-CDCB	-2	-1	0	1	2
Stature	1.60T					
Strength	1.10S					
Dairy Form	0.300					
Rump Angle	0.90S					
Thurl Width	0.90W					
Foot Angle	0.30S					
R Legs - Side View	0.30S					
R Legs - Rear View	0.20S					
Fore Attachment	0.80S					
Rear Udder Height	0.70H					
Rear Udder Width	1.40W					
Udder Depth	0.10S					
Udder Cleft	1.30S					
Front Teat Placement	1.10C					
Rear Teat Placement	0.20C					
Teat Length	-0.90S					
Udder Composite	1.01					



709BS11 VIRGIL *NP



Cher-Mi Lover Varda 'E 91 E 91 MS'
DAM OF 709BS11 VIRGIL *NP
2ND LACTATION



Cher-Mi Cliff Valerie 'E 92 E 92 MS'
MGD OF 709BS11 VIRGIL
GRAND CHAMPION VERMONT STATE SHOW
2022

NEW GENERATION GENETICS

www.brownswiss.com

(920) 568-0554

E-mail: info@brownswiss.com