

# 709BS18 Hilltop Acres Tesla

## TIKTOK ET \*TM

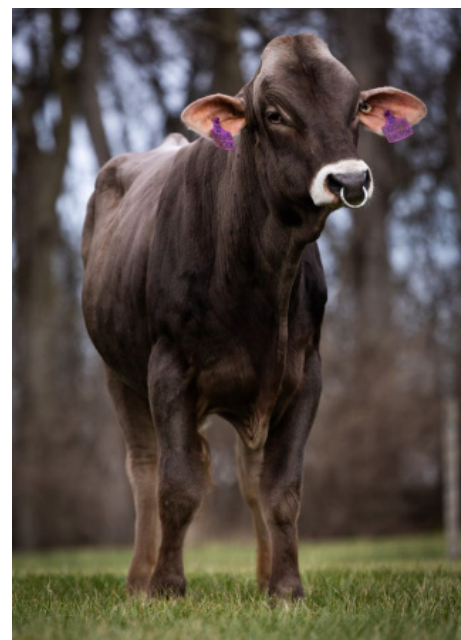
840003292601381 aAa: 231 Beta Cas: A2A2 Kappa Casein: AB  
 Born: 9/16/24

### Genomic Gems

TESLA X DESIGN X SKYHIGH

04/2026 G-CDCB PERFORMANCE			
MILK +1215	FAT +46 / -0.02%	PROTEIN +51 / +0.04%	PPR 138
PROD. 63%R N/A DTRS/N/A HRDS TYPE 66%R			
PL +3.2	UDC +0.51	SCS 2.73	TYPE +0.80
Milking Speed 108	CM\$ 522	Conception (SCR) N/A	
Cow Livability +1.0	HCR 0.5	CCR -3.3	
CE 3.3%	NM\$ \$496	DPR -1.7	MOB +0.2

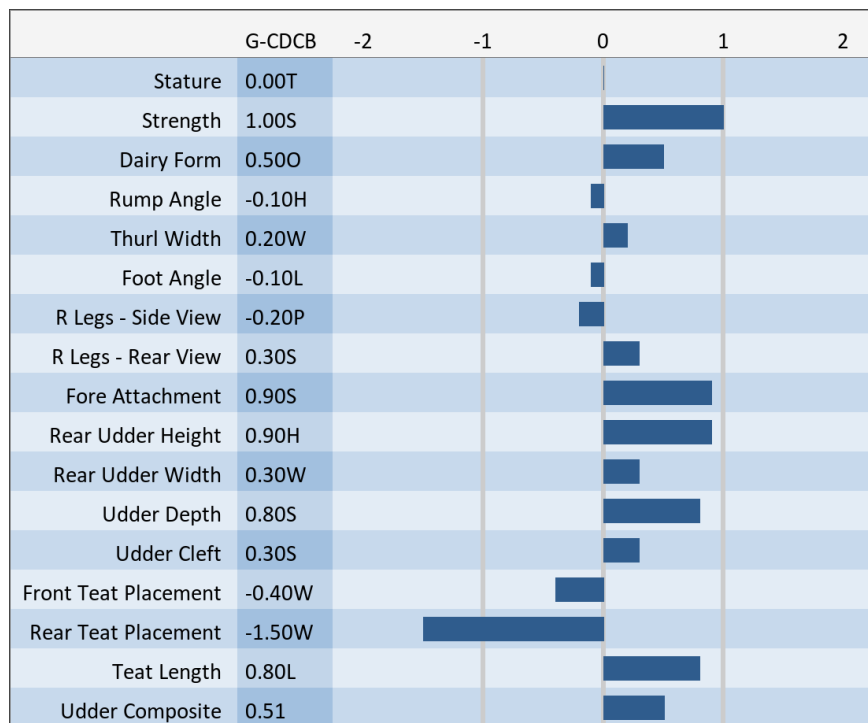
**Sire:** Hilltop Acres J Tesla ET  
**Dam:** Hilltop Acres D Tinder 'V 85 V 86 MS'  
 2-03 331d 3x 31,390 4.6 1,435 3.7 1,154  
**MGS:** HF Design ET  
**MGD:** Hilltop Acres Sky Toyota ETV 'V 86 V 86 MS'  
 1-11 365d 3x 33,700 4.1 1,370 3.5 1,174



709BS18 TIKTOK



Hilltop Acres D Tinder ET 'V 85 V 86 MS'  
 DAM OF 709BS18 TIKTOK



### NEW GENERATION GENETICS

www.brownswiss.com

(920) 568-0554

E-mail: info@brownswiss.com