

709BS19 Hilltop Acres TN

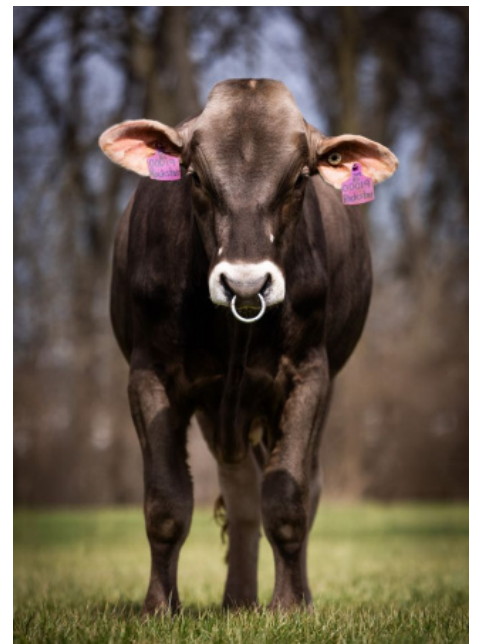
ROCKSTAR ET *TM

840003292601428 aAa: 324 Beta Cas: A1A2 Kappa Casein: BB
 Born: 11/24/24

Genomic Gems, Preferred Sex
 TOP NOTCH X PACTOLE X RICHARD

| 04/2026 G-CDCB PERFORMANCE | | | |
|--|--------------------|-------------------------|------------|
| MILK +1087 | FAT +46 / 0.00% | PROTEIN +48 / +0.05% | PPR 141 |
| PROD. 64%R N/A DTRS/N/A HRDS TYPE 67%R | | | |
| PL +1.5 | UDC +1.60 | SCS 3.03 | TYPE +1.20 |
| Milking Speed 110 | CM\$ 405 | Conception (SCR) N/A | |
| Cow Livability -0.8 | HCR -0.3 | CCR -1.6 | |
| CE 4.1% | NM\$ \$384 | DPR -1.1 | MOB +0.4 |

Sire: Hilltop Acres Top Notch ET
Dam: Red Brae Pactole Nicki ETV 'E 90 E 91 MS'
 2-00 292d 3x 30,120 4.7 1,416 3.7 1,116
MGS: Pactole
MGD: Red Brae Spa Richard Nicole 'E 91 E 90 MS'
 6-02 365d 2x 28,340 4.7 1,341 3.7 1,043
 Lifetime: 1,973d 132,020m 6,371f 4,965p



709BS19 ROCKSTAR



Red Brae Pactole Nicki ETV 'E 90 E 91 MS'
 DAM OF 709BS19 ROCKSTAR

| | G-CDCB | -2 | -1 | 0 | 1 | 2 |
|----------------------|--------|----|----|---|---|---|
| Stature | 0.90T | | | | | |
| Strength | 1.00S | | | | | |
| Dairy Form | 1.10O | | | | | |
| Rump Angle | 1.00S | | | | | |
| Thurl Width | 0.70W | | | | | |
| Foot Angle | 0.10S | | | | | |
| R Legs - Side View | -0.10P | | | | | |
| R Legs - Rear View | 0.20S | | | | | |
| Fore Attachment | 1.90S | | | | | |
| Rear Udder Height | 2.00H | | | | | |
| Rear Udder Width | 2.00W | | | | | |
| Udder Depth | 0.30S | | | | | |
| Udder Cleft | 1.00S | | | | | |
| Front Teat Placement | 0.90C | | | | | |
| Rear Teat Placement | 0.10C | | | | | |
| Teat Length | -0.30S | | | | | |
| Udder Composite | 1.60 | | | | | |

NEW GENERATION GENETICS

www.brownswiss.com

(920) 568-0554

E-mail: info@brownswiss.com