

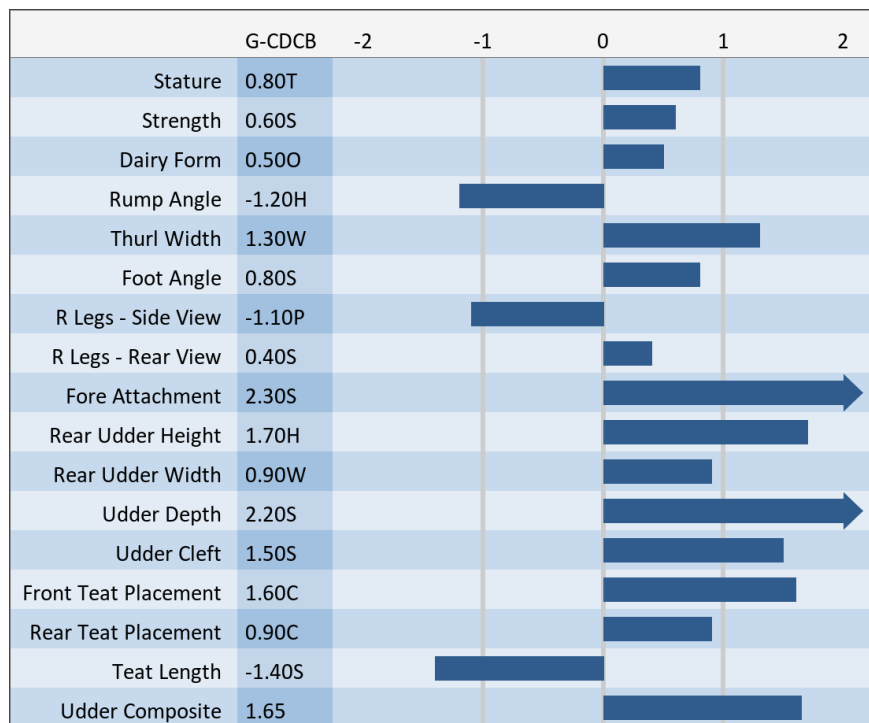
709BS2 V B COLLAPS FULL THROTTLE *TM

840003281379861 aAa: 426 Beta Cas: A1A2 Kappa Casein: BB
Born: 11/10/23

Genomic Gems, Preferred Sex, Center Stage Collection
COLLAPS X SECRET WEAPON X NORWIN

04/2026 G-CDCB PERFORMANCE			
MILK +328	FAT -4 / -0.09%	PROTEIN +9 / -0.01%	PPR 28
PROD. 66%R N/A DTRS/N/A HRDS TYPE 68%R			
PL +1.5	UDC +1.65	SCS 3.17	TYPE +1.10
Milking Speed 111	CM\$ -14	Conception (SCR) N/A	
Cow Livability +0.8	HCR 1.3	CCR -2.1	
CE 4%	NM\$ -\$9	DPR -1.5	MOB +0.3

Sire: COLLAPS
Dam: V B Secret Weapon Truly 'E 90 E 90 MS'
3-00 305d 3x 19,340 4.5 870 3.4 657
R.I.P 4-08 239d 3x 18,498 4.4 814 3.2 599
MGS: Cutting Edge Secret Weapon
MGD: V B HP Norwin Teanna ET '2E 90'
LIFETIME: 1,647d 130,060m 5,713f 4,203p
RESERVE ALL AMERICAN YEARLING IN MILK 2018



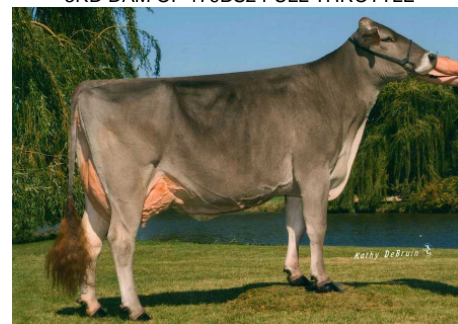
V B SECRET WEAPON TRULY 'E 90 E 90 MS'
DAM OF 709BS2 FULL THROTTLE



V B HP NORWIN TEANNA ET '2E 90'
Reserve All American Yearling in Milk 2018
MGD OF 709BS2 FULL THROTTLE



Sun-Made Whiskey Tea ET 'E 90 E 92 MS'
3RD DAM OF 179BS2 FULL THROTTLE



Milk & Honey Toni's Tessa 'E 91 E 92 MS'
5th Dam of 179BS2 FULL THROTTLE

NEW GENERATION GENETICS

www.brownswiss.com

(920) 568-0554

E-mail: info@brownswiss.com