

# 709BS7 Hilltop Acres TOP THAT ET \*TM

USA ELIGIBLE ONLY

840003284965005 aAa: 651 Beta Cas: A1A2 Kappa Casein: BB  
Born: 5/14/24

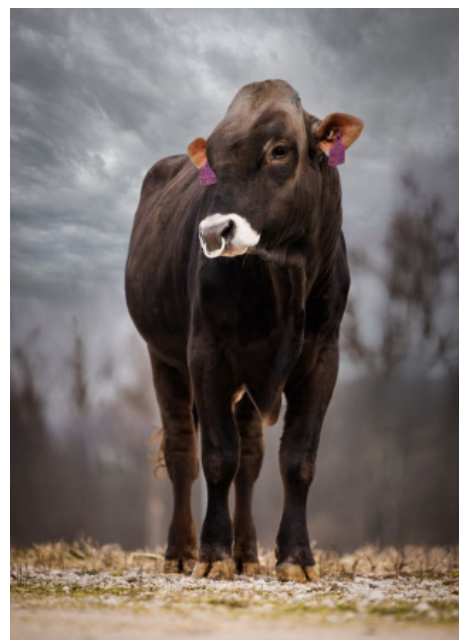
**Genomic Gems, Preferred Sex**  
NASHVILLE X KINGSLEY X DOBOY

## 04/2026 G-CDCB PERFORMANCE

MILK +631	FAT +45 / +0.09%	PROTEIN +40 / +0.09%	PPR 144
PROD. 67%R N/A DTRS/N/A HRDS TYPE 68%R			
PL +5.7	UDC +0.29	SCS 2.82	TYPE +0.50
Milking Speed 103	CM\$ 638	Conception (SCR) N/A	
Cow Livability +2.6	HCR 0	CCR 1.8	
CE 2.8%	NM\$ \$605	DPR +1.5	MOB 0.0

**Sire:** Hilltop Acres Nashville ET \*TM  
**Dam:** Hilltop Acres K Tammie-ET 'EX 92 EX 94 MS'  
1-11 305D 3x 28,940 4,6 1,321 3.4 996  
2-10 305D 3x 33,440 5.0 1,667 3.7 1,244  
**MGS:** Gubelman Kingsley  
**MGD:** Hilltop Acres DB Tabby ETV '2E 91 E 91 MS'  
3-05 365D 3x 40,090 5.0 2,015 3.7 1,500  
4-09 365D 3X 39,910 4.9 1,966 3.7 1,476

	G-CDCB	-2	-1	0	1	2
Stature	-2.30S	←				
Strength	0.30S					
Dairy Form	-0.80T					
Rump Angle	0.90S					
Thurl Width	0.60W					
Foot Angle	-0.20L					
R Legs - Side View	-0.60P					
R Legs - Rear View	-0.20H					
Fore Attachment	1.40S					
Rear Udder Height	0.50H					
Rear Udder Width	0.20W					
Udder Depth	0.10S					
Udder Cleft	-0.60W					
Front Teat Placement	0.30C					
Rear Teat Placement	0.10C					
Teat Length	-0.20S					
Udder Composite	0.29					



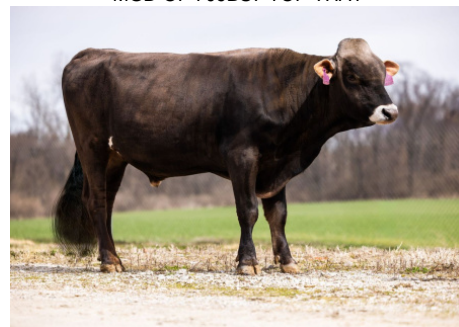
709BS7 TOP THAT



Hilltop Acres Kingsley Tammie 'E 92 E 94 MS'  
DAM OF 709BS7 TOP THAT



Hilltop Acres DB Tabby ETV '2E 91 E 91 MS'  
MGD OF 709BS7 TOP THAT



709BS7 TOP THAT

**NEW GENERATION GENETICS**

www.brownswiss.com

(920) 568-0554

E-mail: info@brownswiss.com